

WAAS CH <b>45505</b> <b>W26A</b>	APP CRS <b>264°</b>	Rwy Ldg TDZE Apt Elev	<b>5500</b> <b>671</b> <b>672</b>
--	------------------------	-----------------------------	---


# RNAV (GPS) RWY 26

KEOKUK MUNI (EOK)

**RNP APCH - GPS.**

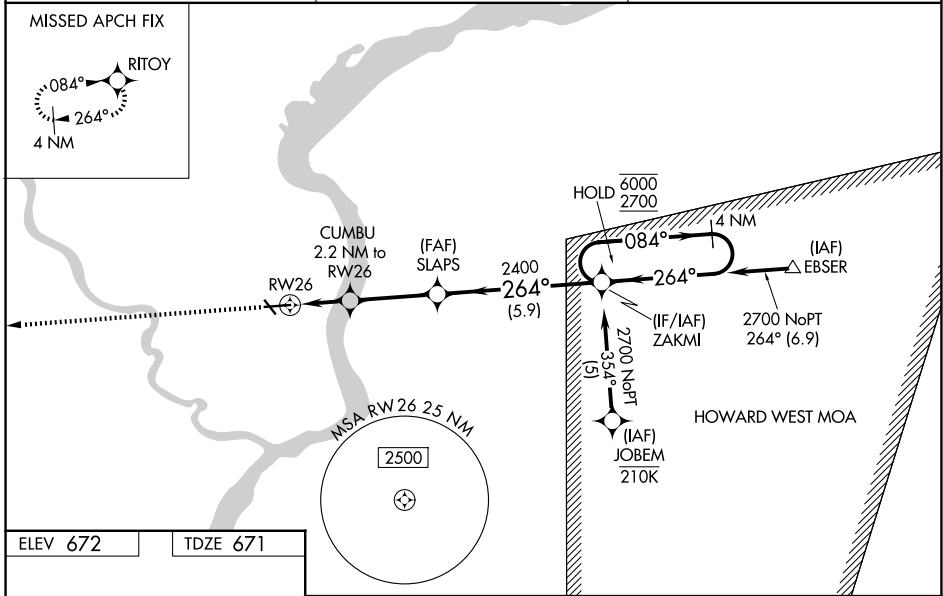
**⚠** Circling Rwy 32 NA at night. Baro-VNAV and VDP NA when using Burlington altimeter setting. Inop table does not apply to LPV. For uncompensated Baro-VNAV systems, LNAV/VNAV NA below -21°C or above 54°C. When local altimeter setting not received, use Burlington altimeter setting and increase LPV DA to 927 feet, increase LNAV/VNAV DA to 1005 feet, increase all MDAs 60 feet, and Circling visibility Cat C ¼ SM. For inop ALS, increase LNAV/VNAV all Cats visibility to ¾ SM and LNAV all Cats visibility to 1 SM. For inop ALS, when using Burlington altimeter setting, increase LNAV/VNAV all Cats and LNAV Cats A and B visibility to 1 SM.

**MALSR**

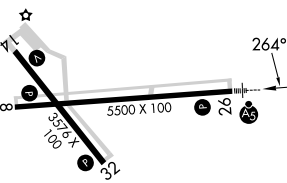


**MISSED APPROACH:**  
Climb to 2700 direct RIT0Y and hold.

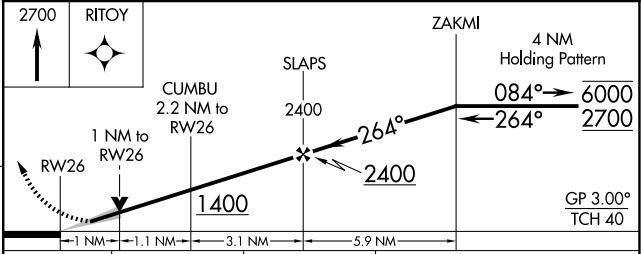
AWOS-3 <b>118.375</b>	KANSAS CITY CENTER <b>126.225 317.775</b>	UNICOM <b>122.8</b> (CTAF) <b>📻</b>
--------------------------	--	--



ELEV 672 TDZE 671



REIL Rwy 8, 14, and 32 **📻**  
MIRL Rwy 8-26 and 14-32 **📻**



CATEGORY	A	B	C	D
LPV DA	871-¾	200 (200-¾)		NA
LNAV/VNAV DA	949-¾	278 (300-¾)		NA
LNAV MDA	1040-¾	369 (400-¾)		NA
CIRCLING	1180-1 508 (600-1)	1220-1 548 (600-1)	1220-1½ 548 (600-1½)	NA

NC-3, 11 JUN 2026 to 09 JUL 2026

NC-3, 11 JUN 2026 to 09 JUL 2026