

WAAS CH 61130 W17A	APP CRS 168°	Rwy Ldg TDZE Apt Elev	6100 936 946
--	------------------------	-----------------------------	---

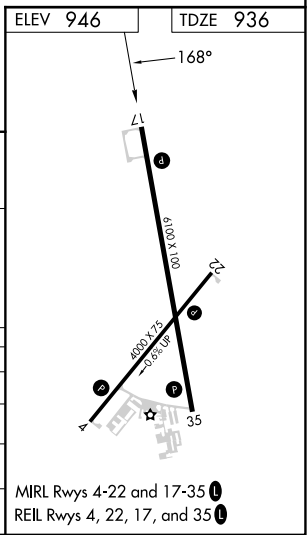
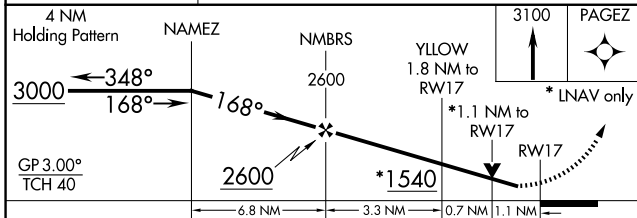
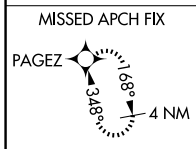
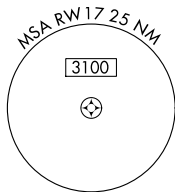
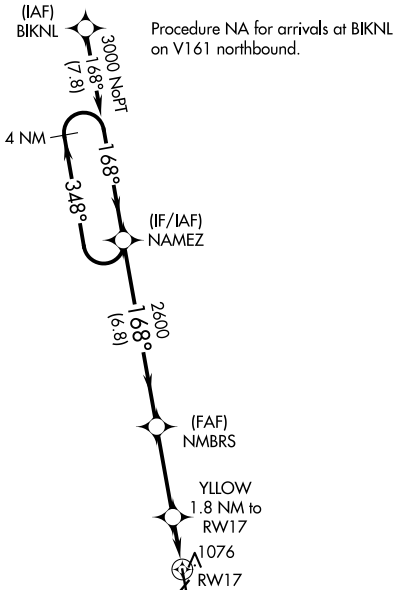
RNAV (GPS) RWY 17

ATKINSON MUNI (PTS)

⚠ For uncompensated Baro-VNAV systems, LNAV/VNAV NA below -16°C (4°F) or above 54°C (130°F). DME/DME RNP-0.3 NA. Rwy 17 helicopter visibility reduction below ¾ SM NA.

⚠ MISSED APPROACH: Climb to 3100 direct PAGEZ and hold.

AWOS-3PT 118.775	KANSAS CITY CENTER 128.6 282.325	UNICOM 123.0 (CTAF) 0
----------------------------	--	--



CATEGORY	A	B	C	D
LPV DA	1216-1 280 (300-1)			
LNAV/VNAV DA	1237-1 301 (300-1)			
LNAV MDA	1340-1 404 (400-1)	1340-1½ 404 (400-1½)		
CIRCLING	1480-1 534 (600-1)	1520-1½ 574 (600-1½)	1720-2½ 774 (800-2½)	

NC-2, 11 JUN 2026 to 09 JUL 2026

NC-2, 11 JUN 2026 to 09 JUL 2026

MIRL Rwy 4-22 and 17-35 **0**
REIL Rwy 4, 22, 17, and 35 **0**