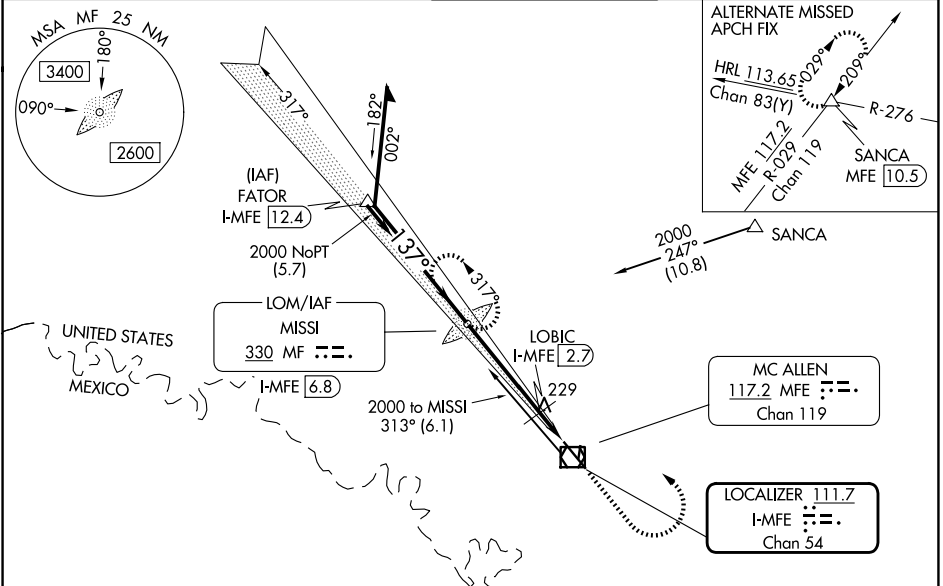


LOC/DME I-MFE 111.7 Chan 54	APP CRS 137°	Rwy Ldg 6983 TDZE 107 Apt Elev 107
---	------------------------	---

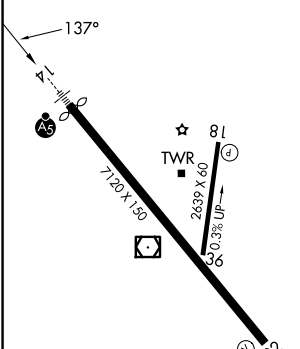
ILS or LOC RWY 14

MC ALLEN INTL (MF'E)

ADF required. Circling NA northeast of Rwy 14-32. When local altimeter setting not received, use Weslaco altimeter setting: increase all DA 39 feet; increase all MDA 40 feet and S-LOC 14 Cat C/D and Circling Cat C visibility 1/8 mile, increase LOBIC Fix Minimums S-LOC 14 Cat C/D visibility 1/4 mile. For inop ALS, increase S-LOC 14 Cat C/D visibility to 1 1/8 SM. For inop ALS when using Weslaco altimeter setting, increase LOBIC Fix Minimums S-LOC 14 Cat C/D visibility to 1 1/8 SM.		MALSR 	MISSED APPROACH: Climb to 1500 then climbing left turn to 2000 direct to MISSI LOM and hold.	
ATIS 128.5	VALLEY APP CON 126.55 377.2	MC ALLEN TOWER ★ 118.5 (CTAF) 256.9	GND CON 121.8	UNICOM 122.95

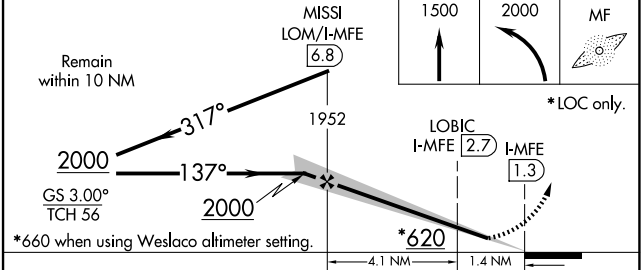


ELEV 107	D	TDZE 107
----------	----------	----------



REIL Rwy 32
HIRL Rwy 14-32
MIRL Rwy 18-36

FAF to MAP 5.5 NM					
Knots	60	90	120	150	180
Min:Sec	5:30	3:40	2:45	2:12	1:50



CATEGORY	A	B	C	D
S-ILS 14	307-1/2 200 (200-1/2)			
S-LOC 14	620-1/2	513 (600-1/2)	620-1	513 (600-1)
CIRCLING	620-1	513 (600-1)	620-1 1/2 513 (600-1 1/2)	800-2 1/4 693 (700-2 1/4)
LOBIC FIX MINIMUMS				
S-LOC 14	540-1/2	433 (500-1/2)	540-3/4	433 (500-3/4)
CIRCLING	580-1	473 (500-1)	580-1 1/2 473 (500-1 1/2)	800-2 1/4 693 (700-2 1/4)

SC-3, 11 JUN 2026 to 09 JUL 2026

SC-3, 11 JUN 2026 to 09 JUL 2026