

WAAS CH <b>78001</b> W32A	APP CRS <b>317°</b>	Rwy Ldg <b>7120</b> TDZE <b>102</b> Apt Elev <b>107</b>
---------------------------------	------------------------	---

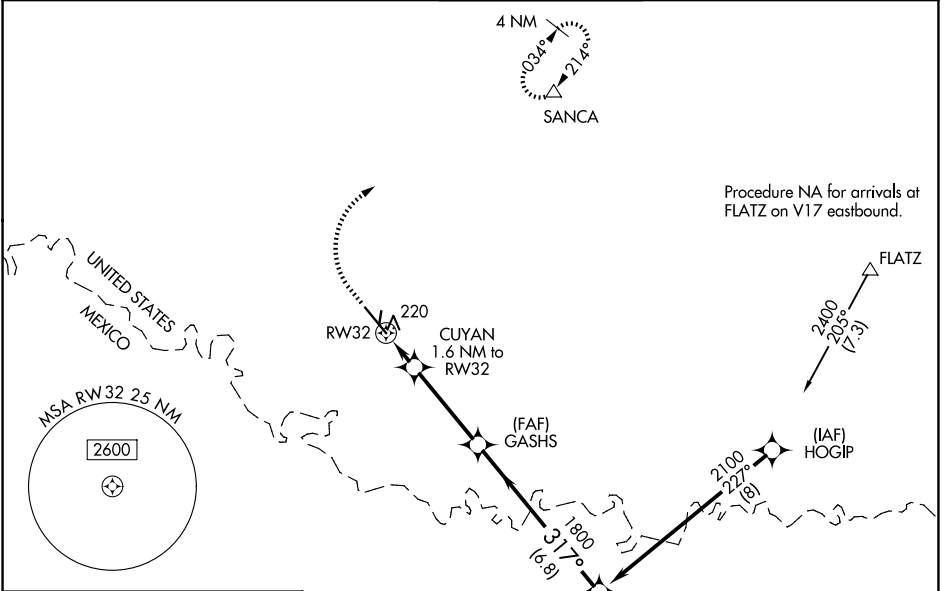
# RNAV (GPS) RWY 32

MC ALLEN INTL (MFE)

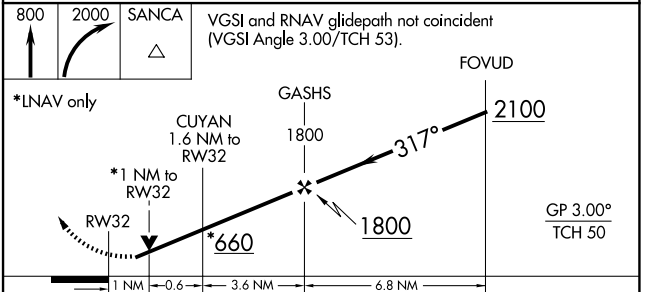
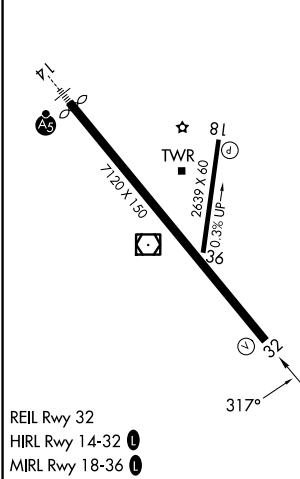
**⚠** For uncompensated Baro-VNAV systems, LNAV/VNAV NA below 1°C (34°F) or above 54°C (130°F). Circling NA northeast of Rwy 14-32. DME/DME RNP-0.3 NA.  
**⚠** When local altimeter setting not received, use Weslaco altimeter setting: increase all DA 39 feet and LNAV/VNAV all Cat visibility ¼ mile; increase all MDA 40 feet and LNAV Cat C/D visibility ½ mile. Baro-VNAV and VDP NA when using Weslaco altimeter setting.

MISSED APPROACH: Climb to 800 then climbing right turn to 2000 direct SANCA and hold.

ATIS <b>128.5</b>	VALLEY APP CON <b>126.55 377.2</b>	MC ALLEN TOWER * <b>118.5 (CTAF) 0 256.9</b>	GND CON <b>121.8</b>	UNICOM <b>122.95</b>
----------------------	---------------------------------------	---	-------------------------	-------------------------



ELEV 107	<b>D</b>	TDZE 102
----------	----------	----------



CATEGORY	A	B	C	D
LPV DA		302-¾	200 (200-¾)	
LNAV/VNAV DA		391-⅞	289 (300-⅞)	
LNAV MDA		480-1	378 (400-1)	
CIRCLING	580-1	473 (500-1)	580-1½ 473 (500-1½)	800-2¼ 693 (700-2¼)

SC-3, 11 JUN 2026 to 09 JUL 2026

SC-3, 11 JUN 2026 to 09 JUL 2026