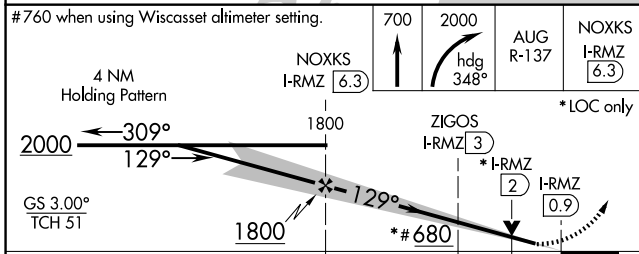
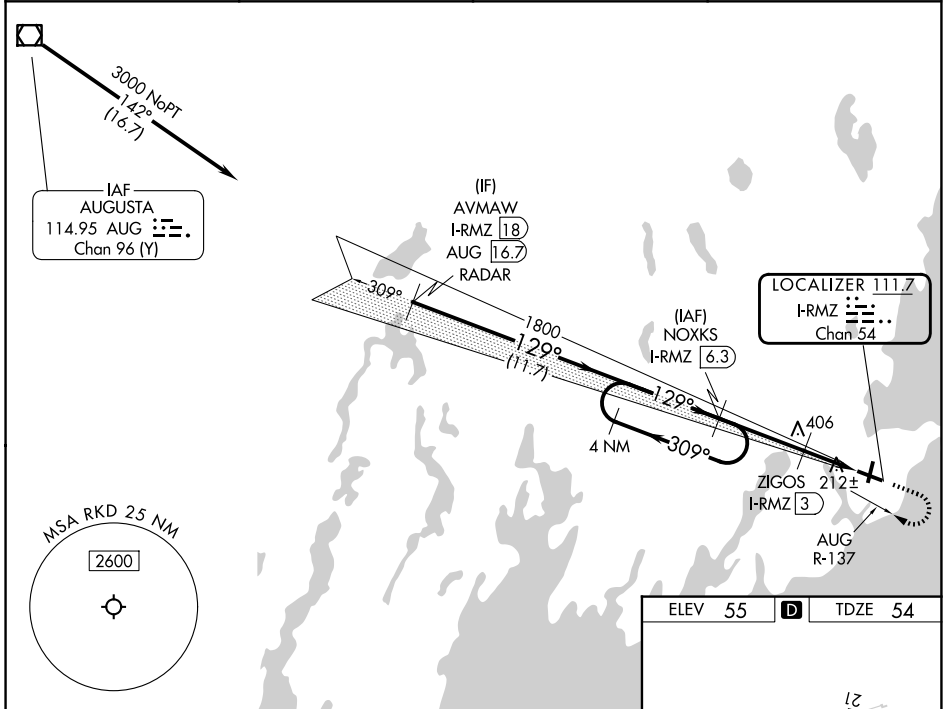


LOC/DME I-RMZ 111.7 Chan 54	APP CRS 129°	Rwy Ldg TDZE 54 Apt Elev 55	5012
---	------------------------	---	-------------

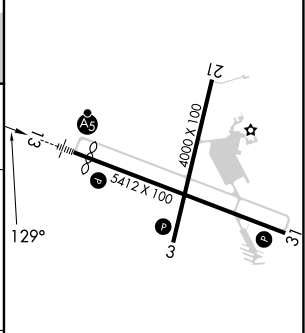
ILS or LOC RWY 13

KNOX COUNTY RGNL (R.KD)

DME required.		MALSRL 	MISSED APPROACH: Climb to 700 then climbing right turn to 2000 on heading 348° and on AUG R-137 to NOXKS/I-RMZ 6.3 DME and hold.
<p>▼ VDP NA when using Wiscasset altimeter setting. When local altimeter setting not received, use Wiscasset altimeter setting and increase all DA to 319 feet and all MDA 80 feet, increase S-LOC 13 Cats C/D visibility 3/8 SM and Circling Cat C 1/2 SM. For inop ALS when using Wiscasset altimeter setting increase S-ILS 13 all Cats visibility to 3/8 SM and S-LOC 13 Cats C/D to 1 3/8 SM.</p>			
AWOS-3PT 119.025	PORTLAND APP CON* 120.4 299.2	CLNC DEL 123.8	UNICOM 123.05 (CTAF)



ELEV 55	D	TDZE 54
---------	---	---------



CATEGORY	A	B	C	D
S-ILS 13		254-1/2	200 (200-1/2)	
S-LOC 13	440-1/2	386 (400-1/2)	440-5/8	386 (400-5/8)
CIRCLING	580-1	525 (600-1)	720-1 3/4	1140-3
			665 (700-1 3/4)	1085 (1100-3)

REIL Rwy 3 and 31

MIRL Rwy 3-21

HIRL Rwy 13-31

NE-1, 11 JUN 2026 to 09 JUL 2026

NE-1, 11 JUN 2026 to 09 JUL 2026