

APP CRS	Rwy Ldg	<b>5412</b>
<b>309°</b>	TDZE	<b>55</b>
	Apt Elev	<b>55</b>

# RNAV (GPS) RWY 31

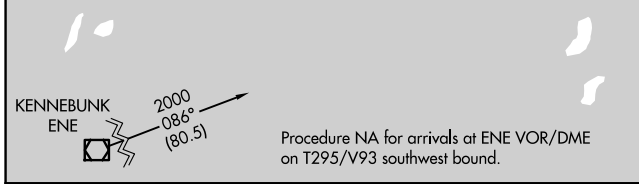
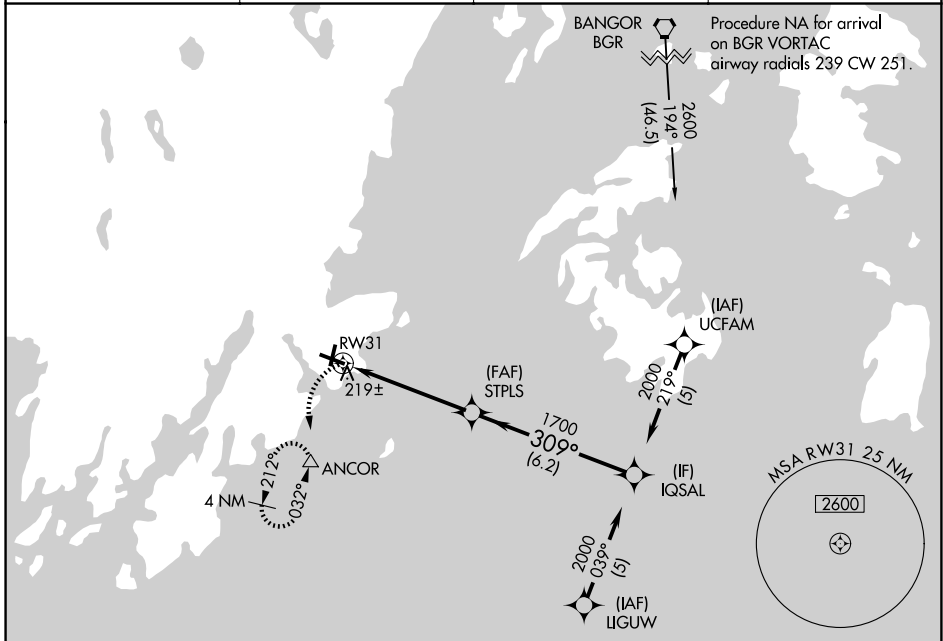
KNOX COUNTY RGNL (R.KD)

RNP APCH.

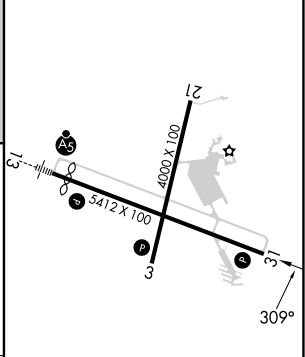
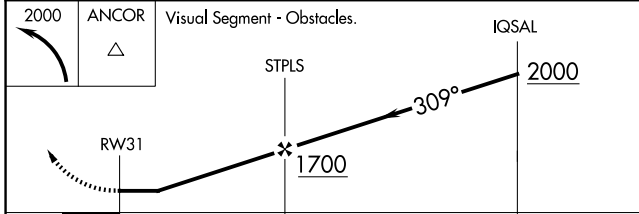
**▽**  
**▲** Rwy 31 helicopter visibility reduction below ¾ SM NA.

MISSED APPROACH: Climbing left turn to 2000 direct ANCOR and hold, continue climb-in-hold to 2000.

AWOS-3PT <b>119.025</b>	PORTLAND APP CON ★ <b>120.4 299.2</b>	CLNC DEL <b>123.8</b>	UNICOM <b>123.05</b> (CTAF) <b>0</b>
----------------------------	--	--------------------------	---



ELEV	55	<b>D</b>	TDZE	55
------	----	----------	------	----



CATEGORY	A	B	C	D
LNVA MDA	480-1	425 (500-1)	480-1¼	425 (500-1¼)
CIRCLING	580-1	525 (600-1)	720-1¾ 665 (700-1¾)	1140-3 1085 (1100-3)

REIL Rwy 3 and 31 **0**  
 MIRL Rwy 3-21 **0**  
 HIRL Rwy 13-31 **0**

NE-1, 11 JUN 2026 to 09 JUL 2026

NE-1, 11 JUN 2026 to 09 JUL 2026