

| | | |
|--|------------------------|--|
| WAAS CH 56616 W18A | APP CRS 185° | Rwy Ldg 12504 TDZE 79 Apt Elev 80 |
|--|------------------------|--|

RNAV (GPS) RWY 18L

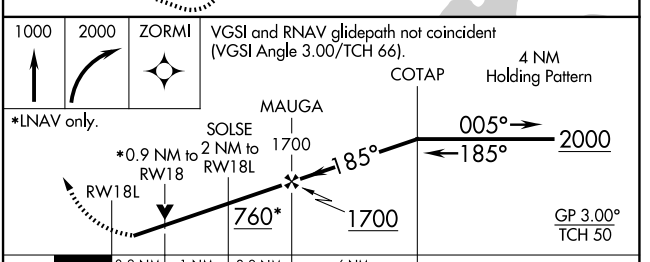
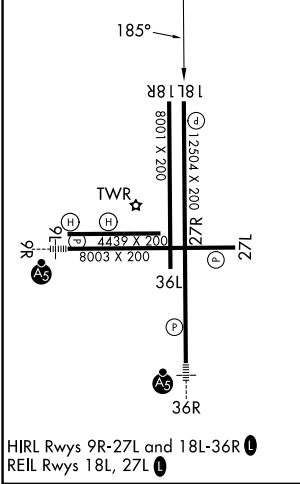
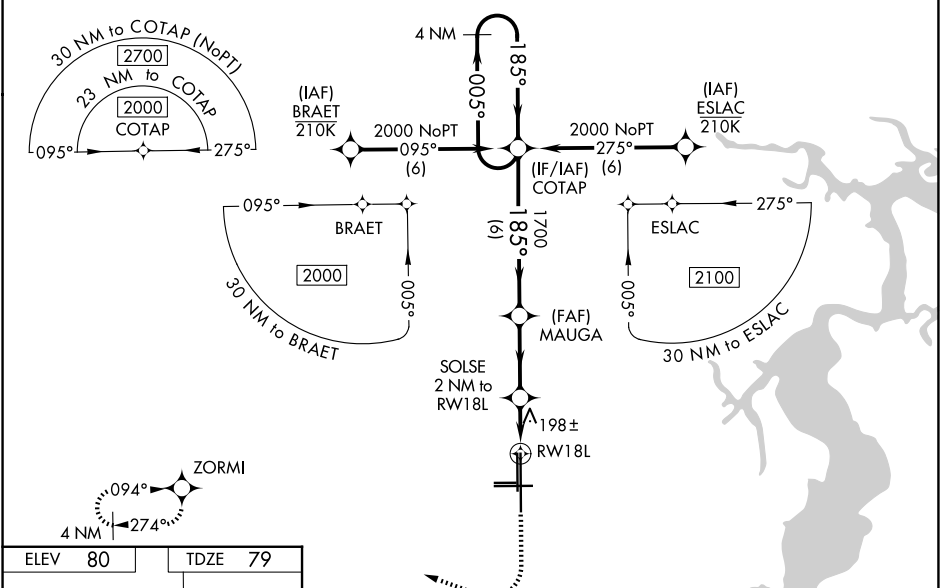
CECIL (VQQ)

▼ Baro-VNAV NA when using Jacksonville Intl altimeter setting. For uncompensated Baro-VNAV systems, LNAV/VNAV NA below -1.5°C (5°F) or above 54°C (130°F). DME/DME RNP-0.3 NA.

▲ When local altimeter setting not received, use Jacksonville Intl altimeter setting and increase all DA 52 feet and all MDA 60 feet. For inop MALSR, increase LNAV Cats C/D visibility to 1½ mile. For inop MALSR, when using Jacksonville Intl altimeter setting, increase LNAV/VNAV all Cats visibility to 1½ mile and LNAV Cats C/D visibility to 1¾ mile. Inop table does not apply to LPV and LNAV/VNAV all Cats and LNAV Cat A/B visibilities. When using Jacksonville Intl altimeter setting, inop table does not apply to LPV all Cats and LNAV Cat A/B visibilities. VDP NA when using Jacksonville Intl altimeter setting.

MISSED APPROACH: Climb to 1000 then climbing right turn to 2000 direct ZORMI and hold.

| | | | | |
|------------------------|--|---|-----------------------------------|-----------------------|
| ATIS 125.275 | JACKSONVILLE APP CON 127.775 377.075 | CECIL TOWER* 126.1 (CTAF) 235.625 | GND CON 121.625 226.675 | GCO 135.075 |
|------------------------|--|---|-----------------------------------|-----------------------|



| CATEGORY | A | B | C | D |
|--------------|----------------------|----------------------|------------------------|----------------------|
| LPV DA | | 329-1 | 250 (300-1) | |
| LNAV/VNAV DA | | 368-1 | 289 (300-1) | |
| LNAV MDA | | 460-1 | 381 (400-1) | |
| CIRCLING | 540-1 460 (500-1) | 560-1 480 (500-1) | 600-1½ 520 (600-1½) | 640-2 560 (600-2) |

SE-3, 11 JUN 2026 to 09 JUL 2026

SE-3, 11 JUN 2026 to 09 JUL 2026