


WAAS CH 82036 W36A	APP CRS 005°	Rwy Ldg 12504 TDZE 72 Apt Elev 80
--	------------------------	--

RNAV (GPS) RWY 36R

CECIL (VQQ)

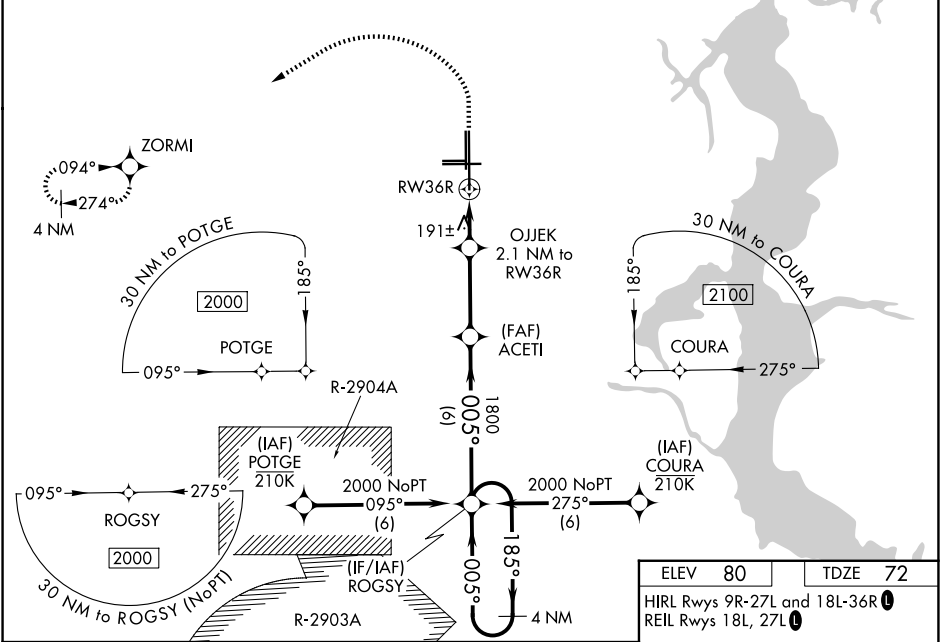
⚠ Baro-VNAV and VDP NA when using Jacksonville Intl altimeter setting.
⚠ For uncompensated Baro-VNAV systems, LNAV/VNAV NA below -1.5°C (5°F) or above 54°C (130°F). DME/DME RNP-0.3 NA. When local altimeter setting not received, use Jacksonville Intl altimeter setting and increase all DA 52 feet and all MDA 60 feet. Increase LNAV/VNAV all Cats visibility to 1 mile and LNAV Cats C, D visibility to ¾ mile.

MALSR

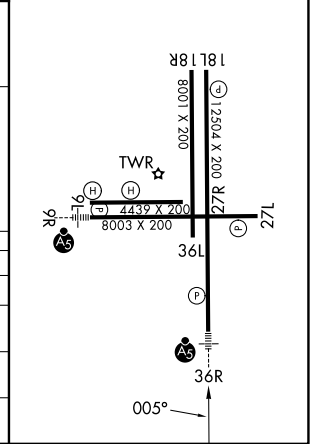
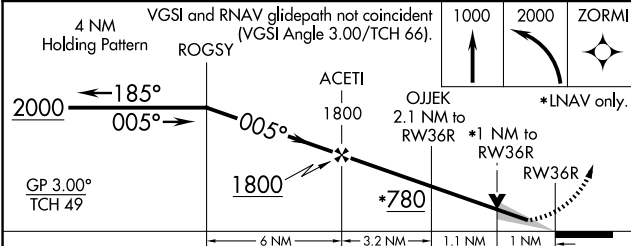


MISSED APPROACH:
Climb to 1000 then climbing left turn to 2000 direct ZORMI and hold.

ATIS 125.275	JACKSONVILLE APP CON 127.775 377.075	CECIL TOWER * 126.1 (CTAF) 235.625	GND CON 121.625 226.675	GCO 135.075
------------------------	--	--	-----------------------------------	-----------------------



ELEV 80	TDZE 72
HIRL Rwy 9R-27L and 18L-36R Ⓢ	
REIL Rwy 18L, 27L Ⓢ	



CATEGORY	A	B	C	D
LPV DA		272-½	200 (200-½)	
LNAV/VNAV DA		467-¾	395 (400-¾)	
LNAV MDA	460-½	388 (400-½)	460-⅝	388 (400-⅝)
CIRCLING	540-1 460 (500-1)	560-1 480 (500-1)	600-1½ 520 (600-1½)	640-2 560 (600-2)

SE-3, 11 JUN 2026 to 09 JUL 2026

SE-3, 11 JUN 2026 to 09 JUL 2026