

TONOPAH, NEVADA

RNAV (GPS) RWY 32

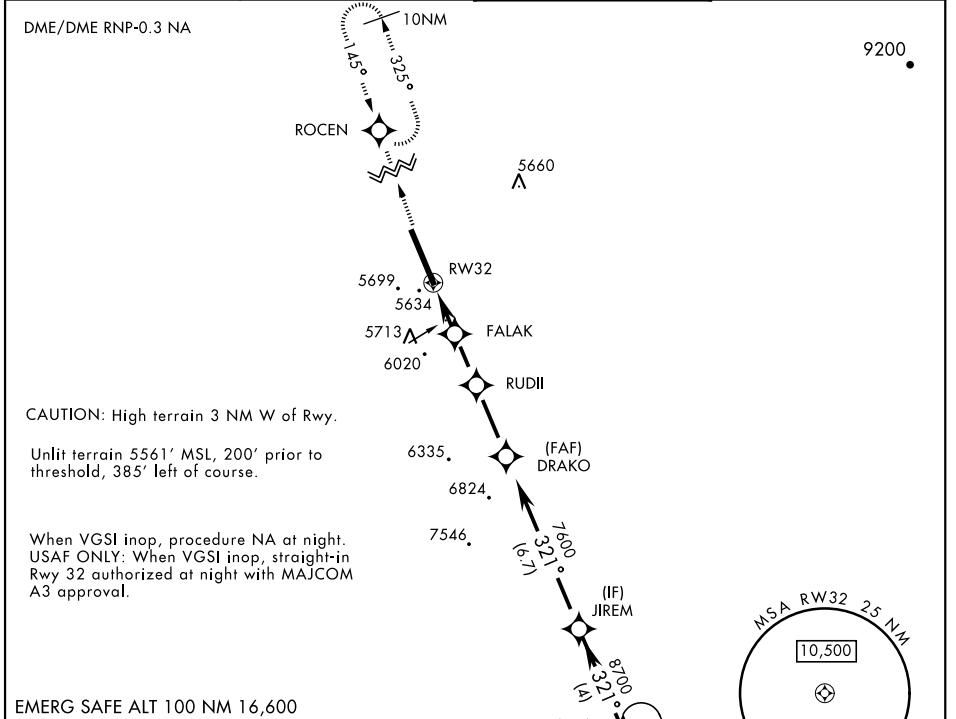
APCH CRS	Rwy ldg	12,001
321°	TDZE	5550
	Arpt Elev	5550

AL-3188 [USAF]

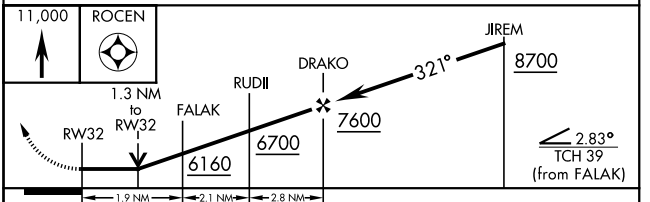
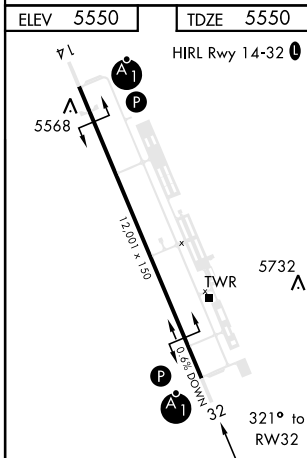
TONOPAH TEST RANGE (KTNX)

<p>▼ * When ALS inop, increase CAT CD vis to 1½ miles. ** Circling not authorized W of Rwy 14-32.</p>	<p>ALSF-1</p>	<p>MISSED APPROACH: Climb to 11,000 direct ROCEN and hold, continue climb-in-hold to 11,000.</p>

<p>AWOS</p> <p>113.0</p>	<p>NELLIS CONTROL</p> <p>119.35 254.4</p>	<p>SILVERBOW TOWER *</p> <p>124.75 257.95 0</p>	<p>GND CON</p> <p>127.25 335.5</p>
---------------------------------	--	--	---



EMERG SAFE ALT 100 NM 16,600



CATEGORY	A	B	C	D
LNAV MDA *	5980/24 430 (500-½)		5980/40 430 (500-¾)	
CIRCLING **	6040-1 490 (500-1)		6040-1½ 490 (500-½)	6100-2 550 (600-2)

TONOPAH, NEVADA
Amdt 3 29MAR18

37°47'N-116°47'W

TONOPAH TEST RANGE (KTNX)

RNAV (GPS) RWY 32

SW-4, 11 JUN 2026 to 09 JUL 2026

SW-4, 11 JUN 2026 to 09 JUL 2026