

VOR/DME Z RWY 14

VORTAC TQQ 113.0 Chan 77	APCH CRS 145°	Rwy Idg THRE 5473 Arprt Elev 5550
--	-------------------------	---

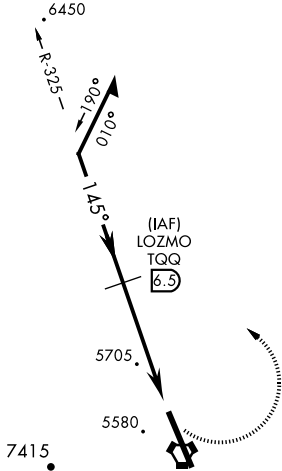
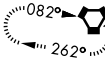
AL-3188 [USAF]

TONOPAH TEST RANGE (KTNX)

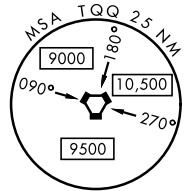
* Circling not authorized W of Rwy 14-32.		MISSED APPROACH: Turn left, climb to 11,000 direct to TPH VORTAC and hold. Continue climb in holding to 11,000.
---	--	---

AWOS 113.0	NELLIS CONTROL 119.35 254.4	SILVERBOW TOWER* 124.75 257.95 0	GND CON 127.25 335.5
----------------------	---------------------------------------	---	--------------------------------

TONOPAH
116.0 TPH
Chan 107



SILVERBOW
113.0 TQQ
Chan 77



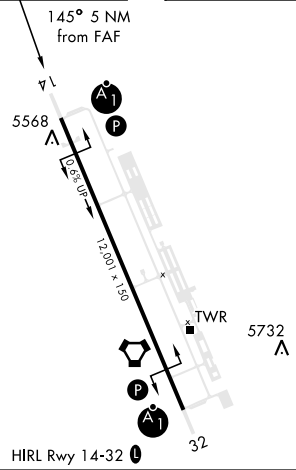
When VGSI inop, procedure NA at night.

USAF ONLY: When Rwy 14 VGSI inop, straight-in Rwy 14 authorized at night with MAJCOM A3 approval.

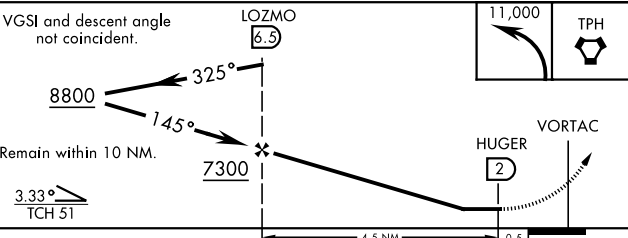
CAUTION: When Rwy 32 VGSI inop, circling to Rwy 32 NA at night.

CAUTION: High terrain 3 NM W of Rwy. Unlit terrain 5558' MSL, 200' prior to Rwy 32 threshold, 200' left of centerline.

ELEV 5550	THRE 5473
-----------	-----------



EMERG SAFE ALT 100 NM 16,600 FROM TQQ



CATEGORY	A	B	C	D	E
S-14	5960/24 487 (500-1/2)		5960/50 487 (500-1)	NOT AUTHORIZED	
CIRCLING*	6040-1 490 (500-1)		6040-1 1/2 490 (500-1 1/2)	NOT AUTHORIZED	

VOR/DME Z RWY 14

SW-4, 11 JUN 2026 to 09 JUL 2026

SW-4, 11 JUN 2026 to 09 JUL 2026