

RNAV (GPS) RWY 23

APCH CRS	Rwy Idg	5018
230°	TDZE	34
	Arpt Elev	41

[USA]

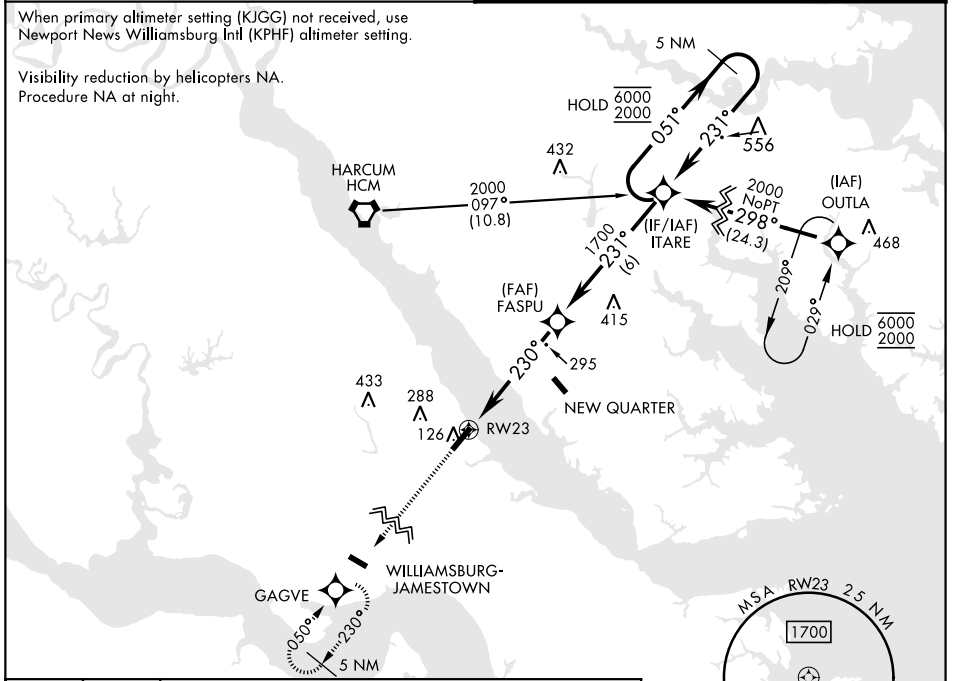
CAMP PEARY LNDG STRIP (KW94)

RNP APCH - GPS	Available Type Unknown	MISSED APPROACH: Climb to 2000 direct GAGVE and hold.
----------------	---------------------------	-------------------------------------------------------

WILLIAMSBURG-JAMESTOWN AWOS-3 120.625	NORFOLK APP CON 125.7 335.625
-------------------------------------------------	-----------------------------------------

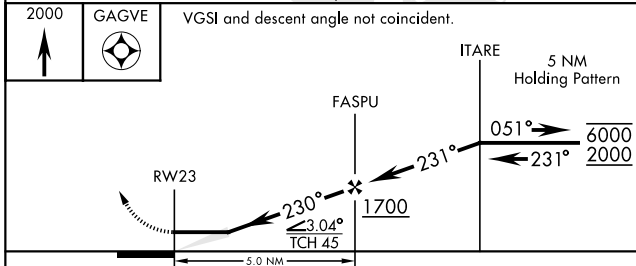
When primary altimeter setting (KJGG) not received, use Newport News Williamsburg Intl (KPHF) altimeter setting.

Visibility reduction by helicopters NA.
Procedure NA at night.



NE-3, 11 JUN 2026 to 09 JUL 2026

NE-3, 11 JUN 2026 to 09 JUL 2026



ELEV	41	TDZE	34
------	----	------	----

Rwy 05-23 Lead-In SFL.

CATEGORY	A	B	C	D
RNAV MDA	560-1	526 (600-1)	560-1½	526 (600-1½)
CIRCLING	560-1 519 (600-1)	600-1 559 (600-1)	600-1½ 559 (600-1½)	740-2¼ 699 (700-2¼)
NEWPORT NEWS / WILLIAMSBURG INTL ALTIMETER SETTING MINIMUMS				
RNAV MDA	600-1	556 (600-1)	600-1½	566 (600-1½)
CIRCLING	600-1 559 (600-1)	640-1 559 (600-1)	600-1½ 559 (600-1½)	780-2¼ 739 (800-2¼)

LIRL Rwy 5-23	
REIL Rwy 5, 23	

RNAV (GPS) RWY 23