

RNAV (GPS) RWY 5

| | | |
|-------------|-----------|-------------|
| APCH CRS | Rwy Idg | 5018 |
| 050° | TDZE | 41 |
| | Arpt Elev | 41 |

[USA]

CAMP PEARY LNDG STRIP (KW94)

RNP APCH - GPS

Available Type Unknown

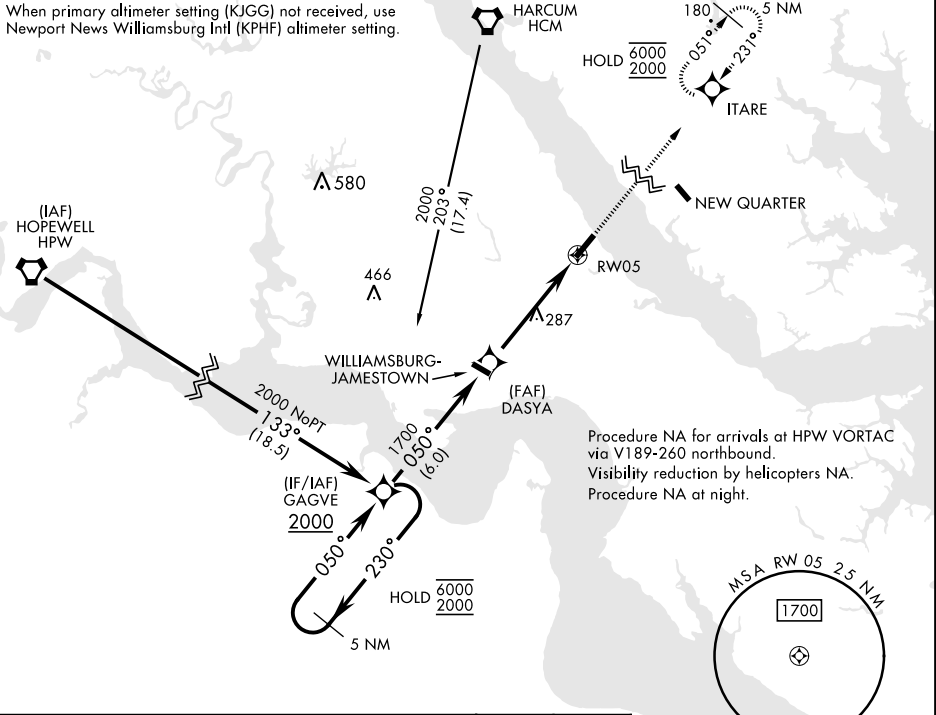
MISSED APPROACH: Climb to 2000 direct ITARE and hold.

▼ Restricted airfield, PPR. Contact Camp Peary Ops prior to landing. Williamsburg Jamestown (KJGG) primary altimeter setting.

WILLIAMSBURG-JAMESTOWN AWOS-3
120.625

NORFOLK APP CON
125.7 335.625

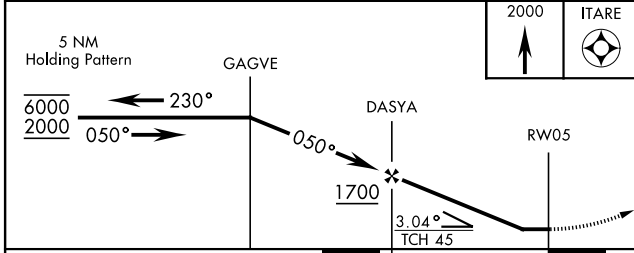
When primary altimeter setting (KJGG) not received, use Newport News Williamsburg Intl (KPHF) altimeter setting.



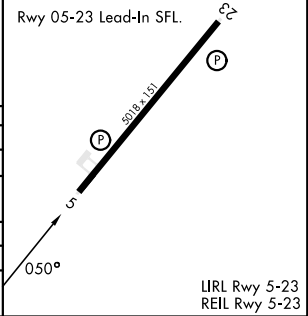
Procedure NA for arrivals at HPW VORTAC via V189-260 northbound.
Visibility reduction by helicopters NA.
Procedure NA at night.

NE-3, 11 JUN 2026 to 09 JUL 2026

NE-3, 11 JUN 2026 to 09 JUL 2026



| | | | |
|------|----|------|----|
| ELEV | 41 | TDZE | 41 |
|------|----|------|----|



| CATEGORY | A | B | C | D |
|--|-------------|-------------|----------------------------|----------------------------|
| LNAV MDA | 600-1 | 559 (600-1) | 600-1 $\frac{5}{8}$ | 559 (600-1 $\frac{1}{2}$) |
| CIRCLING | 600-1 | 620-1 | 620-1 $\frac{5}{8}$ | 760-2 $\frac{1}{4}$ |
| | 559 (600-1) | 579 (600-1) | 579 (600-1 $\frac{5}{8}$) | 719 (800-2 $\frac{1}{4}$) |
| NEWPORT NEWS / WILLIAMSBURG INTL ALTIMETER SETTING | | | | |
| LNAV MDA | 640-1 | 599 (600-1) | 640-1 $\frac{3}{4}$ | 599 (600-1 $\frac{3}{4}$) |
| CIRCLING | 640-1 | 599 (600-1) | 640-1 $\frac{3}{4}$ | 780-2 $\frac{1}{4}$ |
| | | | 599 (600-1 $\frac{3}{4}$) | 739 (800-2 $\frac{1}{4}$) |

RNAV (GPS) RWY 5

LIRL Rwy 5-23
REIL Rwy 5-23