

WAAS CH 90539 W22A	APP CRS 231°	Rwy Idg TDZE Apt Elev	5001 720 720
--	------------------------	-----------------------------	---

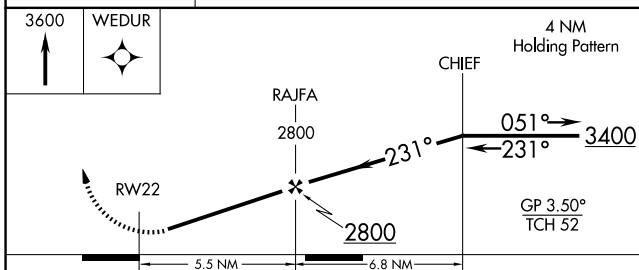
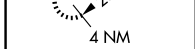
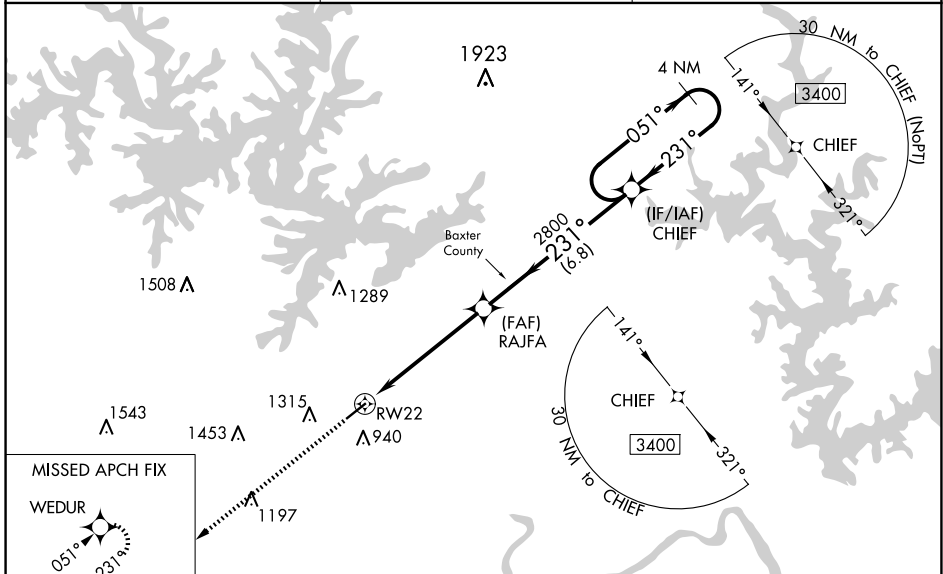
RNAV (GPS) RWY 22

MARION COUNTY RGNL (FLP)

▽ For uncompensated Baro-VNAV systems, LNAV/VNAV NA below -13°C (9°F) or above 54°C (130°F). DME/DME RNP-0.3 NA. Procedure NA at night. Circling NA northwest of Rwy 4-22. Rwy 22 helicopter visibility reduction below 1 SM NA.

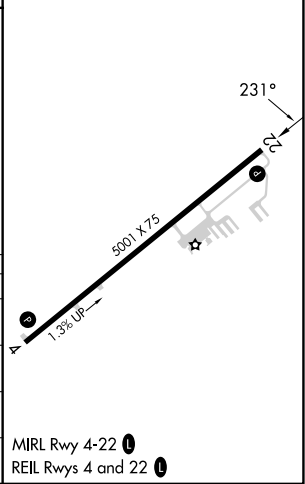
MISSED APPROACH: Climb to 3600 direct WEDUR and hold.

AWOS-3PT 132.075	MEMPHIS CENTER 126.85 281.55	UNICOM 123.0 (CTAF) 0
----------------------------	--	---------------------------------



ELEV 720	TDZE 720
----------	----------

CATEGORY	A	B	C	D
LPV DA	1022-1	302 (400-1)		NA
LNAV/VNAV DA	1169-1 $\frac{3}{8}$	449 (500-1 $\frac{3}{8}$)		NA
LNAV MDA	1320-1	600 (600-1)	1320-1 $\frac{1}{4}$ 600 (600-1 $\frac{3}{4}$)	NA
C CIRCLING	1320-1	600 (600-1)	1360-1 $\frac{1}{4}$ 640 (700-1 $\frac{3}{4}$)	NA



SC-1, 11 JUN 2026 to 09 JUL 2026

SC-1, 11 JUN 2026 to 09 JUL 2026

MIRL Rwy 4-22 0
REIL Rwy 4 and 22 0