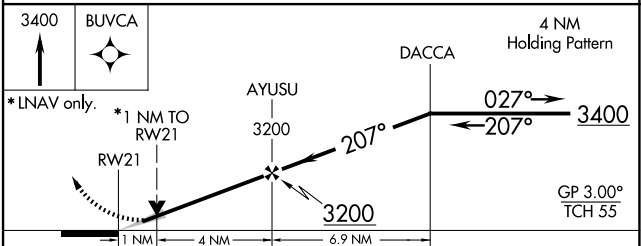
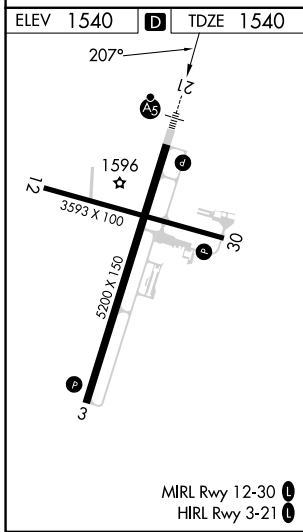
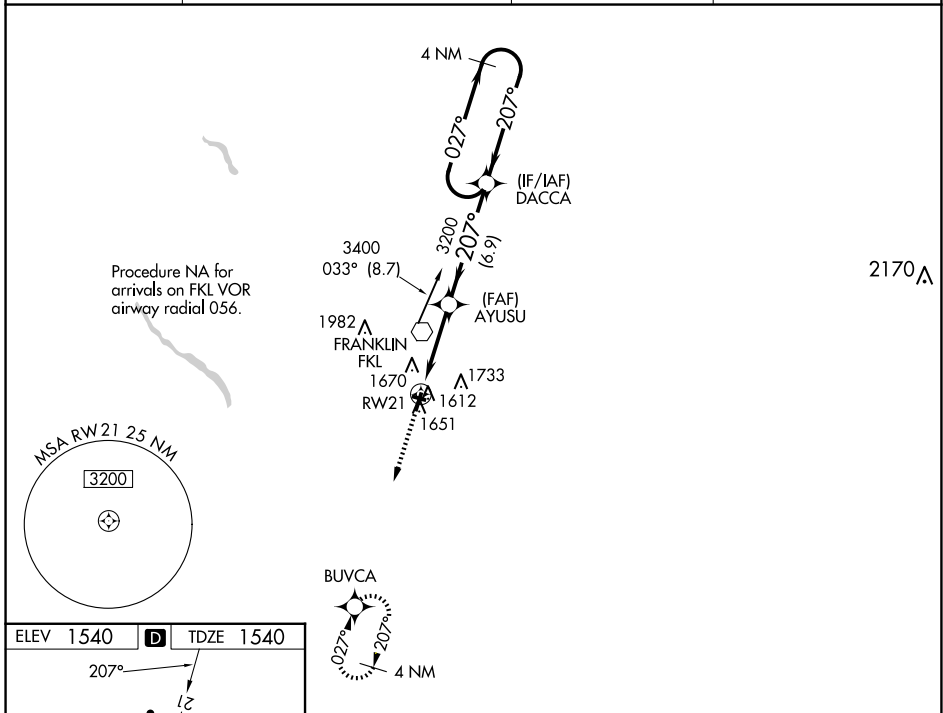


WAAS CH 77501 W21A	APP CRS 207°	Rwy Idg TDZE Apt Elev	5200 1540 1540
--	------------------------	-----------------------------	---

RNAV (GPS) RWY 21

VENANGO RGNL (F'KL)

RNP APCH.		MALSRL	MISSED APPROACH: Climb to 3400 direct BUVCA and hold.
<p>⚠ For uncompensated Baro-VNAV systems, LNAV/VNAV NA below -18°C (0°F) or above 45°C (114°F). Circling Rwy 12 NA at night. For inop ALS, increase LPV all Cats visibility to ¾ SM and LNAV Cats C/D visibility to 1 SM.</p>			
AWOS-3PT 118.175	YOUNGSTOWN APP CON * 126.25 322.3	CLNC DEL 126.25	UNICOM 122.7 (CTAF) 0



CATEGORY	A	B	C	D
LPV DA	1803-½ 263 (300-½)			
LNAV/VNAV DA	1901-¾ 361 (400-¾)			
LNAV MDA	1900-½ 360 (400-½)		1900-5/8 360 (400-5/8)	
CIRCLING	1960-1¼ 420 (500-1¼)	2000-1¼ 460 (500-1¼)	2040-1½ 500 (500-1½)	2100-2 560 (600-2)

NE-4, 11 JUN 2026 to 09 JUL 2026

NE-4, 11 JUN 2026 to 09 JUL 2026