

GRAND FORKS, NORTH DAKOTA

ILS or LOC RWY 18

GRAND FORKS AFB (KRDR)

LOC I-AVA 111.3	APCH CRS 177°	Rwy Idg 12,351
		TDZE 900
		Arprt Elev 911

[USAF]

RADAR or DME required



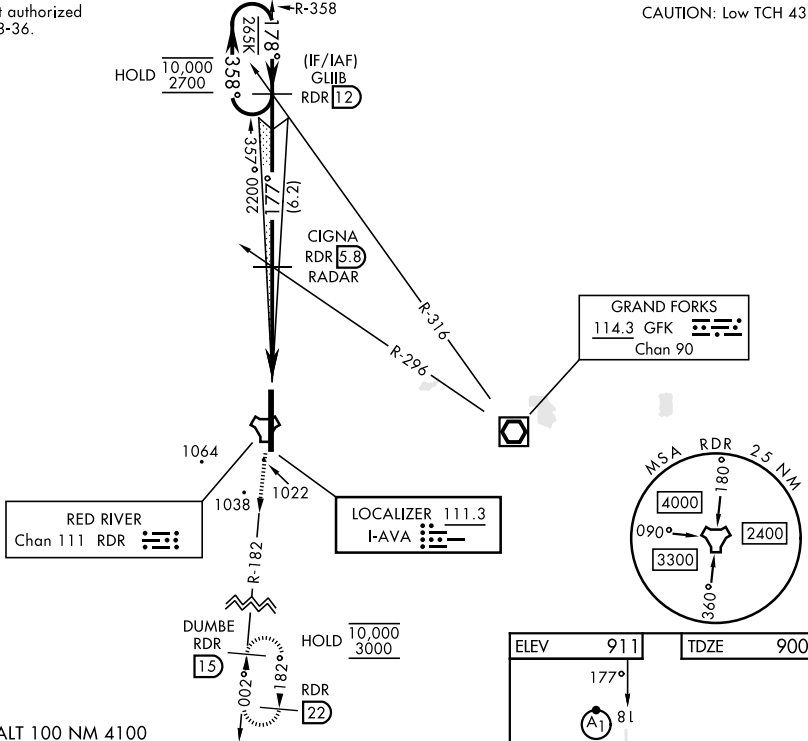
* When ALS inop, increase RVR to 40 and vis to 3/4 mile.
 ** When ALS inop, increase CAT AB RVR to 55 and vis to 1 mile; CAT CDE vis to 1 1/4 miles.

MISSED APPROACH: Climb to 3000 on RDR TACAN R-182 to DUMBE and hold.

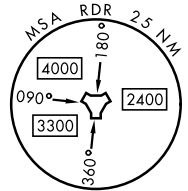
ATIS 273.45	APP CON * 118.1 318.1	RED RIVER TOWER * 124.9 349.0	GND CON 119.15 275.8	CLNC DEL 119.15 360.7
-----------------------	---------------------------------	---	--------------------------------	---------------------------------

*** Circling not authorized E of Rwy 18-36.

CAUTION: Low TCH 43

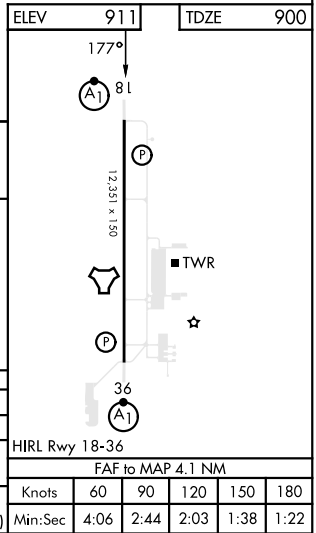
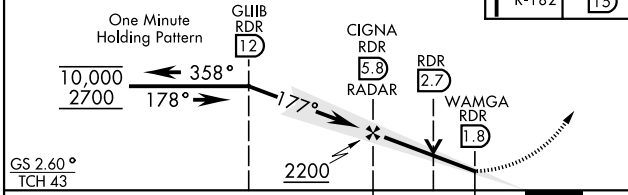
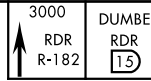


GRAND FORKS
114.3 GFK
Chan 90



1339
EMERG SAFE ALT 100 NM 4100

VGSI and ILS glidepath not coincident (VGSI Angle 2.60/TCH 48).



CATEGORY	A	B	C	D	E
S-ILS 18*	1100/24		200	(200-1/2)	
S-LOC 18**	1340/24	440 (500-1/2)	1340/40	440	(500-3/4)
CIRCLING ***	1340-1 429 (500-1)	1380-1 469 (500-1)	1380-1 1/2 469 (500-1 1/2)	1540-2 629 (700-2)	1560-2 1/4 649 (700-2 1/4)

GRAND FORKS, NORTH DAKOTA

47°58'N-97°24'W

GRAND FORKS AFB (KRDR)

Orig 02NOV23

ILS or LOC RWY 18

NC-1, 11 JUN 2026 to 09 JUL 2026

NC-1, 11 JUN 2026 to 09 JUL 2026