

PIQUA, OHIO

AL-5022 (FAA)

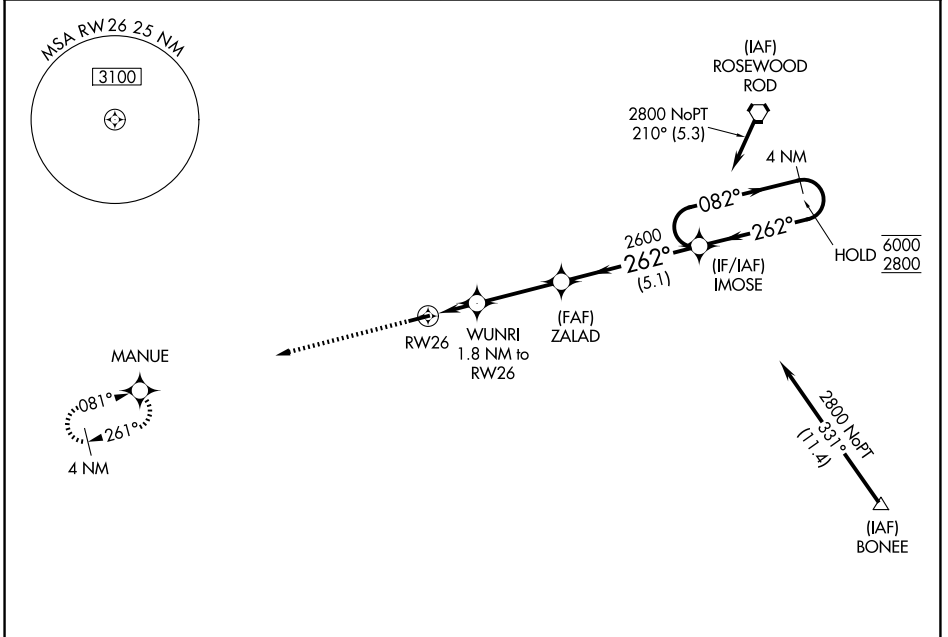
26078

WAAS CH 86745 W26A	APP CRS 262°	Rwy Ldg TDZE 986 Apt Elev 993
--	------------------------	---

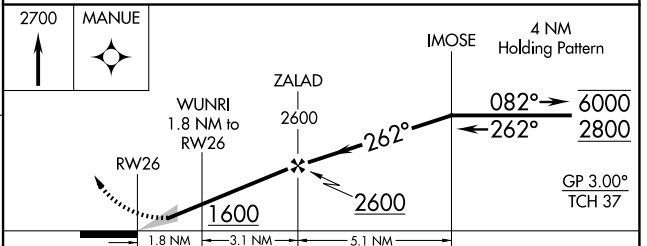
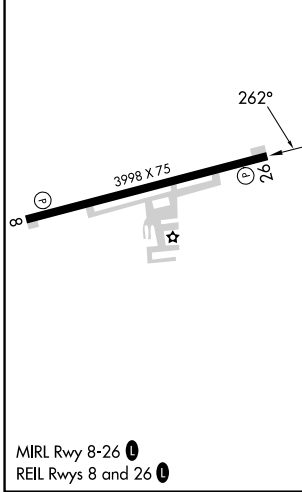
RNAV (GPS) RWY 26

PIQUA/HARTZELL FLD (I17)

RNP APCH - GPS.		MISSED APPROACH: Climb to 2700 direct MANUE and hold.	
▼ Baro-VNAV NA. ▲ NA Use VES altimeter setting.			
DAY ASOS 125.8	VES AWOS-3PT 125.9	COLUMBUS APP CON 134.45 294.5 352.05	UNICOM 123.0 (CTAF) 0



ELEV 993	TDZE 986
-----------------	-----------------



CATEGORY	A	B	C	D
LPV DA	1213-1		227 (300-1)	NA
LNAV/VNAV DA	1296-1		310 (400-1)	NA
LNAV MDA	1380-1	394 (400-1)	1380-1½ 394 (400-1½)	NA
CIRCLING	1440-1 447 (500-1)	1560-1 567 (600-1)	1560-1½ 567 (600-1½)	NA

PIQUA, OHIO
Amdt 1B 19MAR26

40°10'N-84°19'W

PIQUA/HARTZELL FLD (I17)

RNAV (GPS) RWY 26

EC-2, 11 JUN 2026 to 09 JUL 2026

EC-2, 11 JUN 2026 to 09 JUL 2026