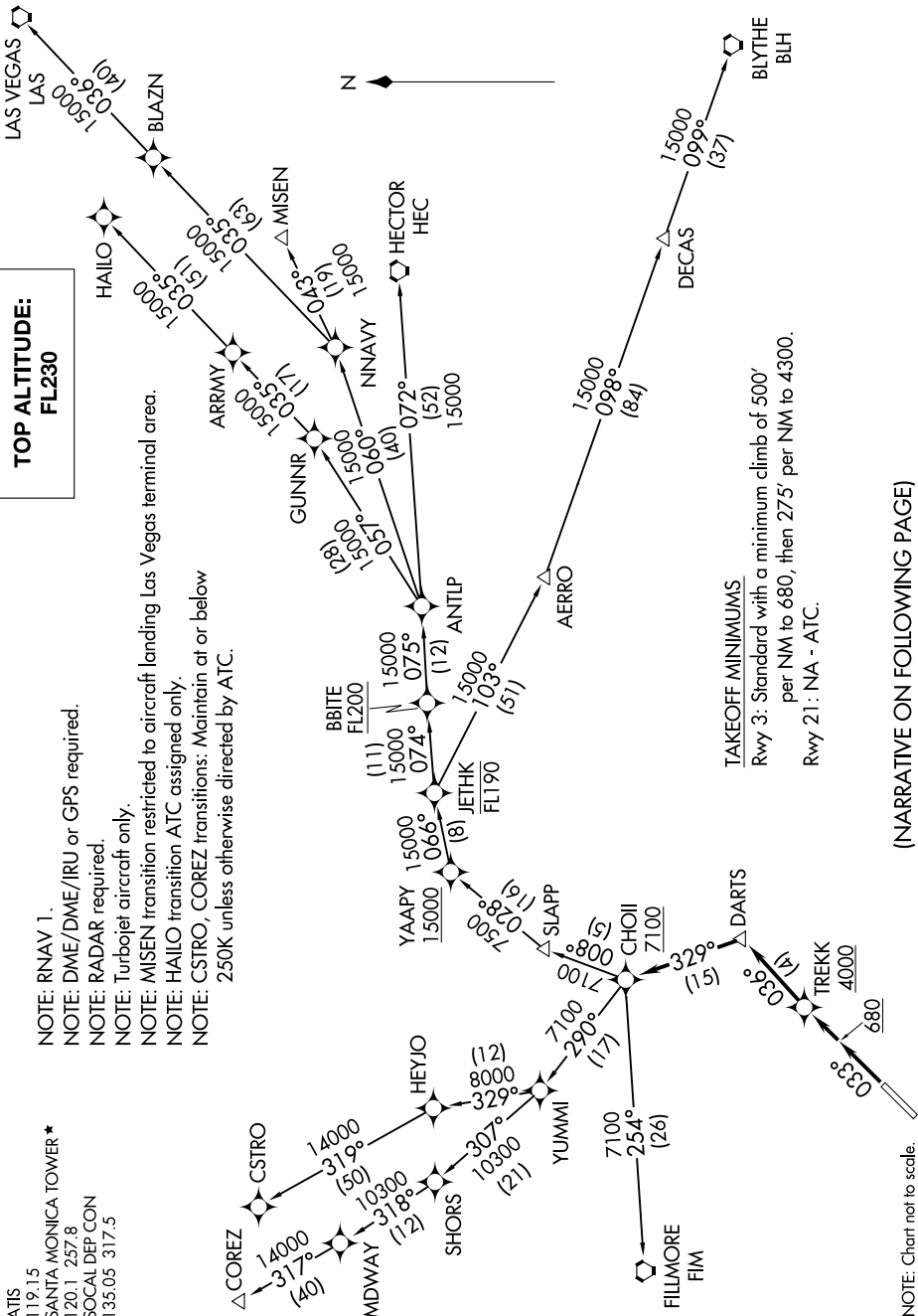


# CHOI THREE DEPARTURE (RNAV)

AL-5023 (FAA)

SANTA MONICA MUNI (SMO)  
SANTA MONICA, CALIFORNIA

9200 100 60 01 0200 000 11 ' 8-W5



ATIS 119.15  
SANTA MONICA TOWER \* 120.1 257.8  
SOCAL DEP CON 135.05 317.5

- NOTE: RNAV 1.
- NOTE: DME/DME/IRU or GPS required.
- NOTE: RADAR required.
- NOTE: Turbojet aircraft only.
- NOTE: MISEN transition restricted to aircraft landing Las Vegas terminal area.
- NOTE: HAYLO transition ATC assigned only.
- NOTE: CSTRO, COREZ transitions: Maintain at or below 250K unless otherwise directed by ATC.

(NARRATIVE ON FOLLOWING PAGE)

SW-3, 11 JUN 2026 to 09 JUL 2026

# CHOI THREE DEPARTURE (RNAV)

10SEP20

SANTA MONICA, CALIFORNIA  
SANTA MONICA MUNI (SMO)

NOTE: Chart not to scale.