

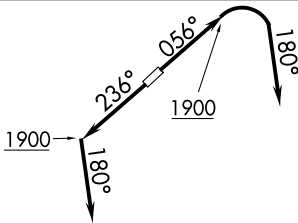
(AHMET5.KKIDS) 25331

AL-5027 (FAA)

CUYAHOGA COUNTY (CGF)  
CLEVELAND, OHIO

# AHMET FIVE DEPARTURE (RNAV)

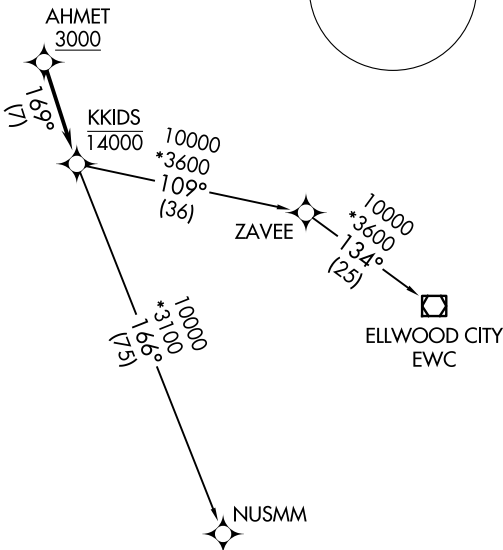
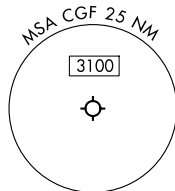
D-ATIS  
 119.95  
 CLNC DEL  
 121.85 (when tower closed)  
 GND CON  
 121.85  
 COUNTY TOWER \*  
 118.5 (CTAF)  
 CLEVELAND DEP CON  
 125.35 346.325



**TOP ALTITUDE:  
 ASSIGNED BY ATC**

RNAV 1 - DME/DME/IRU or GPS.  
 RADAR required.

TAKEOFF MINIMUMS:  
 Rwy's 6, 24: Standard  
 with minimum climb of  
 500' per NM to 1400.



NOTE: Chart not to scale.



## DEPARTURE ROUTE DESCRIPTION

TAKEOFF RUNWAY 6: Climb on heading 056° to 1900, then right turn on heading 180° or as assigned by ATC for RADAR vectors to cross AHMET at or above 3000, thence....

TAKEOFF RUNWAY 24: Climb on heading 236° to 1900, then on heading 180° or as assigned by ATC for RADAR vectors to cross AHMET at or above 3000, thence....

....on track 169° to cross KKIDS at or below 14000, then on (transition).

Maintain ATC assigned altitude, expect filed altitude ten minutes after departure.

ELLWOOD CITY TRANSITION (AHMET5.EWC)

NUSMM TRANSITION (AHMET5.NUSMM)

# AHMET FIVE DEPARTURE (RNAV)

(AHMET5.KKIDS) 27NOV25

CLEVELAND, OHIO  
CUYAHOGA COUNTY (CGF)

EC-2, 11 JUN 2026 to 09 JUL 2026

EC-2, 11 JUN 2026 to 09 JUL 2026