

# GTLKE FIVE DEPARTURE (RNAV)

2020 JUN 06 11 11 JUN 2026 to 09 JUL 2026

**TOP ALTITUDE:  
ASSIGNED BY ATC**

RNAV 1 - DME/DME/IRU or GPS.  
RADAR required.

CLEVELAND DEP CON  
125.35 346.325  
D-ATIS  
119.95  
CLNC DEL  
121.85 (when nvr closed)  
GND CON  
121.85  
COUNTY TOWER ★  
118.5 (CTAF)

**TAKEOFF MINIMUMS:**  
Rwys 6, 24: Standard with minimum climb  
of 500' per NM to 1400.

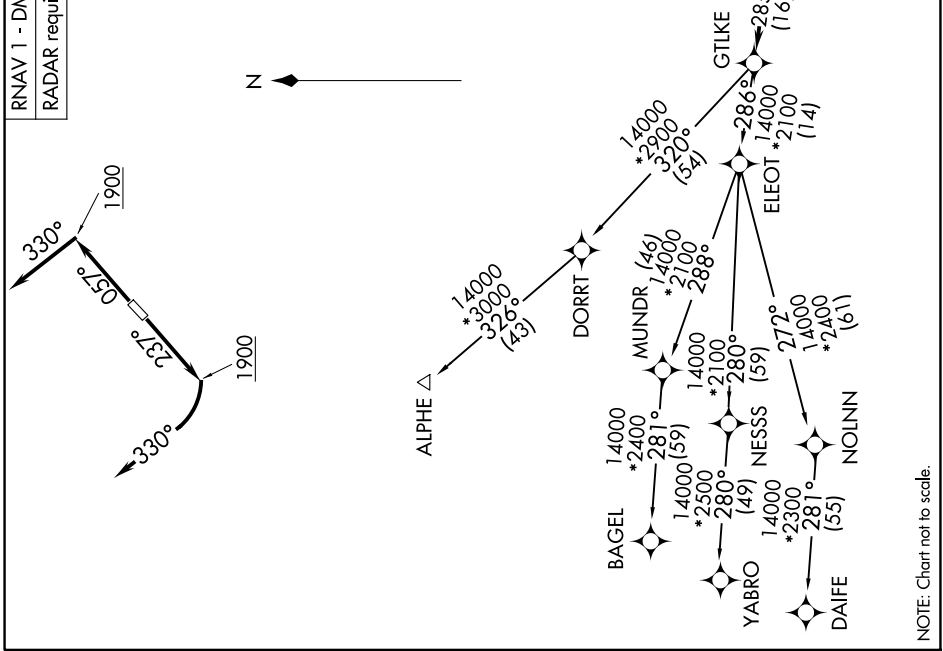
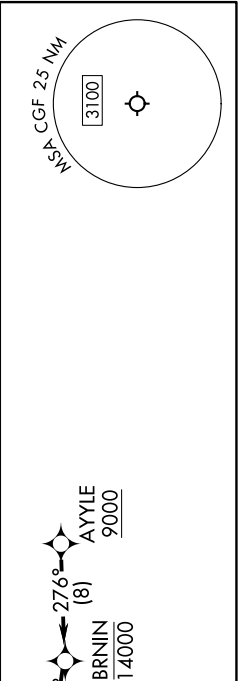
**DEPARTURE ROUTE DESCRIPTION**

**TAKEOFF RUNWAY 6:** Climb on heading 057° to 1900, then on heading 330° or as assigned by ATC for RADAR vectors to cross AYYLE at or above 9000, thence....

**TAKEOFF RUNWAY 24:** Climb on heading 237° to 1900, then right turn heading 330° or as assigned by ATC for RADAR vectors to cross AYYLE at or above 9000, thence....

...on track 276° to cross BRNJN at or below 14000, then on track 285° to GTLKE then on (transition). Maintain ATC assigned altitude, expect filed altitude 10 minutes after departure.

ALPHE TRANSITION (GTLKE5.ALPHE)  
BAGEL TRANSITION (GTLKE5.BAGEL)  
DAIFE TRANSITION (GTLKE5.DAIFE)  
YABRO TRANSITION (GTLKE5.YABRO)



NOTE: Chart not to scale.

EC-2, 11 JUN 2026 to 09 JUL 2026