

| | | |
|--|------------------------|---|
| WAAS CH 42528 W24A | APP CRS 238° | Rwy Ldg 5000 TDZE 873 Apt Elev 876 |
|--|------------------------|---|

RNAV (GPS) RWY 24

CUYAHOGA COUNTY (CGF)

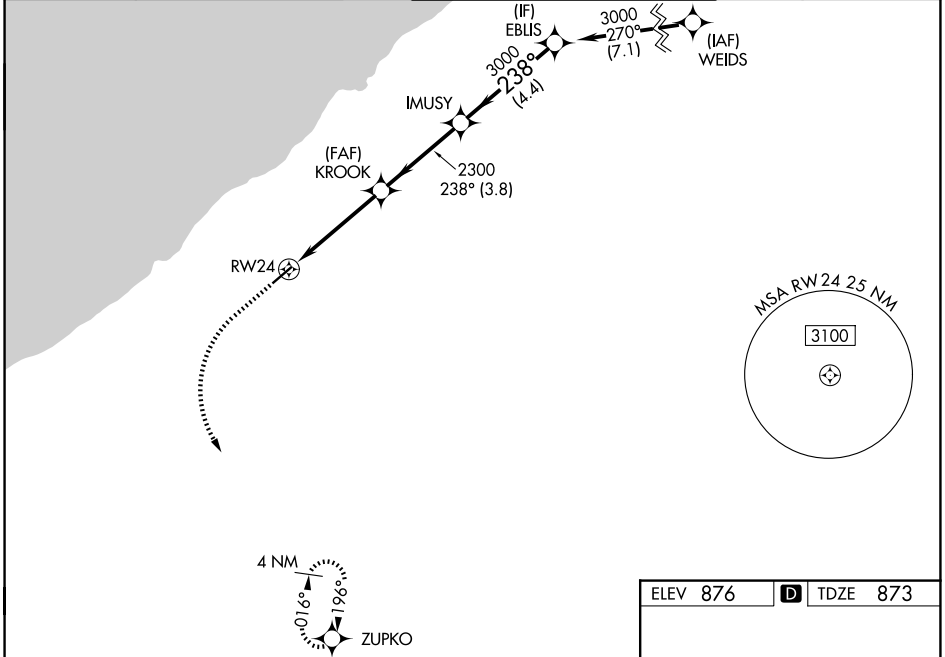
RNP APCH - GPS.

⚠ For uncompensated Baro-VNAV systems, LNAV/VNAV NA below -1.6°C or above 54°C. Baro-VNAV and VDP NA when using CLE altimeter setting. When local altimeter setting not received, use CLE altimeter setting and increase LPV DA to 1131 feet; increase LNAV/VNAV DA to 1263 feet and all visibilities 1/8 SM. Increase all MDAs 60 feet and LNAV visibility Cat C/D 1/4 SM, and Circling visibility Cat C/D 1/4 SM. For inop ALS increase LNAV Cat C, D visibility to 1 1/8 SM.

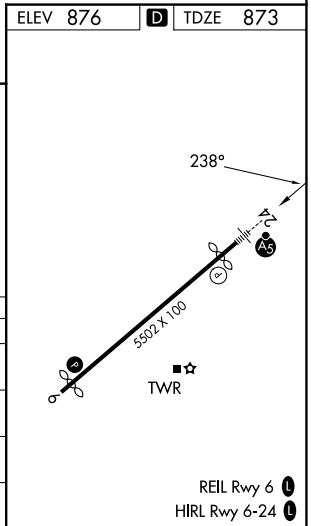
MALSR

MISSED APPROACH:
Climb to 2500 then climbing left turn to 3000 direct ZUPKO and hold.

| | | | |
|-------------------------|--|--|--------------------------|
| D-ATIS 119.95 | CLEVELAND APP CON 125.35 346.325 | COUNTY TOWER★ 118.5 (CTAF) 0 | GND CON 121.85 |
|-------------------------|--|--|--------------------------|



| 2500 | 3000 | ZUPKO | | |
|------------------|------------------------|-----------------------|------------------------|-------------------------------|
| IMUSY | EBLIS | | | |
| KROOK | 2300 | 238° | 3000 | |
| 1.1 NM to RWY 24 | 2300 | 3000 | GP 3.00° | TCH 44 |
| 1.1 NM | 3.2 NM | 3.8 NM | 4.4 NM | |
| CATEGORY | A | B | C | D |
| LPV DA | 1073-1/2 | | 200 (200-1/2) | |
| LNAV/VNAV DA | 1205-1/2 | | 332 (400-1/2) | |
| LNAV MDA | 1280-1/2 407 (500-1/2) | | 1280-3/4 407 (500-3/4) | |
| CIRCLING | 1420-1 544 (600-1) | 1500-1 624 (700-1) | 1560-2 684 (700-2) | 1640-2 1/2 764 (800-2 1/2) |



EC-2, 11 JUN 2026 to 09 JUL 2026

EC-2, 11 JUN 2026 to 09 JUL 2026