

WAAS CH 70628 W06A	APP CRS 057°	Rwy Ldg TDZE Apt Elev	5184 874 876
--	------------------------	-----------------------------	---

RNAV (GPS) RWY 6

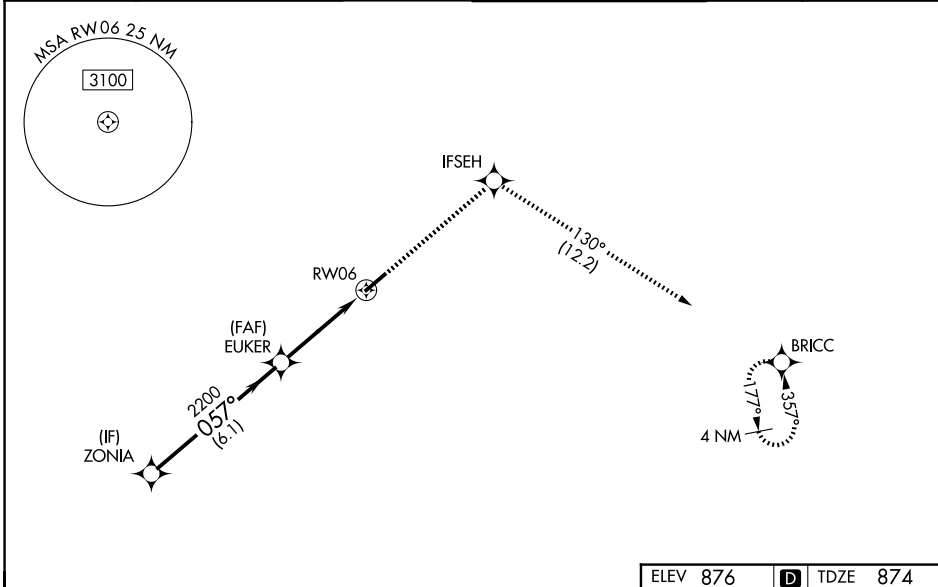
CUYAHOGA COUNTY (CGF)

RNP APCH - GPS.

⚠ Rwy 6 helicopter visibility reduction below 3/4 SM NA. For uncompensated Baro-VNAV systems, LNAV/VNAV NA below -16°C or above 54°C. Baro-VNAV and VDP NA when using CLE altimeter setting. When local altimeter setting not received, use CLE altimeter setting and increase LPV DA to 1233 feet and all visibilities 1/2 SM. Increase LNAV/VNAV DA to 1433 feet and all visibilities 1/4 SM. Increase all MDAs 60 feet and LNAV visibility Cat C/D 1/2 SM, and Circling visibility Cat C/D 1/4 SM.

MISSED APPROACH: Climb to 3100 direct IFSEH and on track 130° to BRICC and hold.

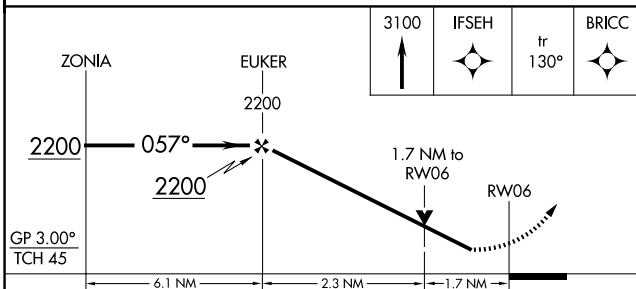
D-ATIS 119.95	CLEVELAND APP CON 125.35 346.325	COUNTY TOWER★ 118.5 (CTAF)	GND CON 121.85
-------------------------	--	--------------------------------------	--------------------------



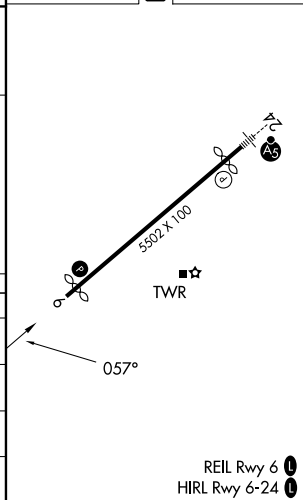
EC-2, 11 JUN 2026 to 09 JUL 2026

EC-2, 11 JUN 2026 to 09 JUL 2026

ELEV 876	D	TDZE 874
----------	----------	----------



CATEGORY	A	B	C	D
LPV DA	1175-7/8 301 (300-7/8)			
LNAV/VNAV DA	1375-13/8 501 (500-13/8)			
LNAV MDA	1460-1 586 (600-1)	1460-13/4 586 (600-13/4)		
CIRCLING	1460-1 584 (600-1)	1500-1 624 (700-1)	1560-2 684 (700-2)	1640-2 1/2 764 (800-2 1/2)



REIL Rwy 6
HIRL Rwy 6-24