

ZAAPA SIX DEPARTURE (RNAV)

EC-2, 11 JUN 2026 to 09 JUL 2026

| |
|--|
| TOP ALTITUDE: ASSIGNED BY ATC |
|--|

| |
|------------------------------|
| RNAV 1 - DME/DME/IRU or GPS. |
| RADAR required. |

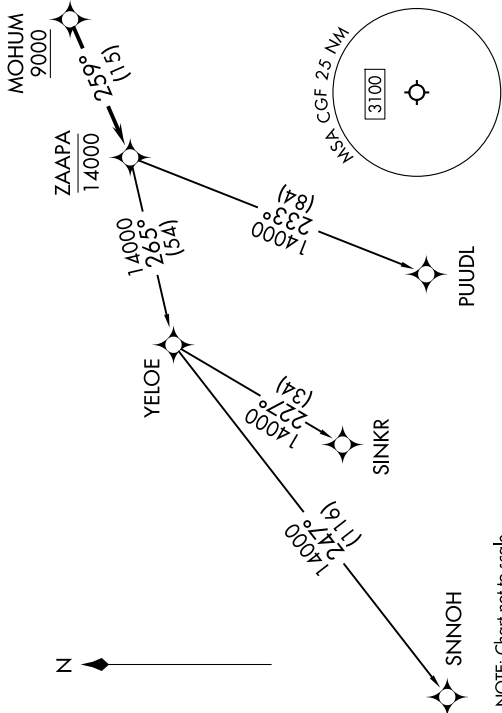
CLEVELAND DEP CON
125.35 346.325
D-ATIS
119.95
CLNC DEL
121.85 (when twr closed)
GND CON
121.85
COUNTY TOWER*
118.5 (CTAF)

TAKEOFF MINIMUMS:
Rvys 6, 24: Standard with minimum climb
of 500' per NM to 1400.

NOTE: PUIJL TRANSITION: For aircraft at or
below FL220 only or as assigned by ATC.

ZAAPA SIX DEPARTURE (RNAV)

(ZAAPA6.ZAAPA) 27NOV25



NOTE: Chart not to scale.

DEPARTURE ROUTE DESCRIPTION

TAKEOFF RUNWAY 6: Climb on heading 057° to 1900, then on heading 330° or as assigned by ATC for RADAR vectors to cross MOHUM at or above 9000, thence....

TAKEOFF RUNWAY 24: Climb on heading 237° to 1900, then right turn heading 330° or as assigned by ATC for RADAR vectors to cross MOHUM at or above 9000, thence....

....on track 259° to cross ZAAPA at or below 14000, then on (transition). Maintain ATC assigned altitude, expect filed altitude ten minutes after departure.

PUIJL TRANSITION (ZAAPA6.PUIJL)
 SINKR TRANSITION (ZAAPA6.SINKR)
 SNNOH TRANSITION (ZAAPA6.SNNOH)

EC-2, 11 JUN 2026 to 09 JUL 2026