

JORJO FIVE DEPARTURE (RNAV)

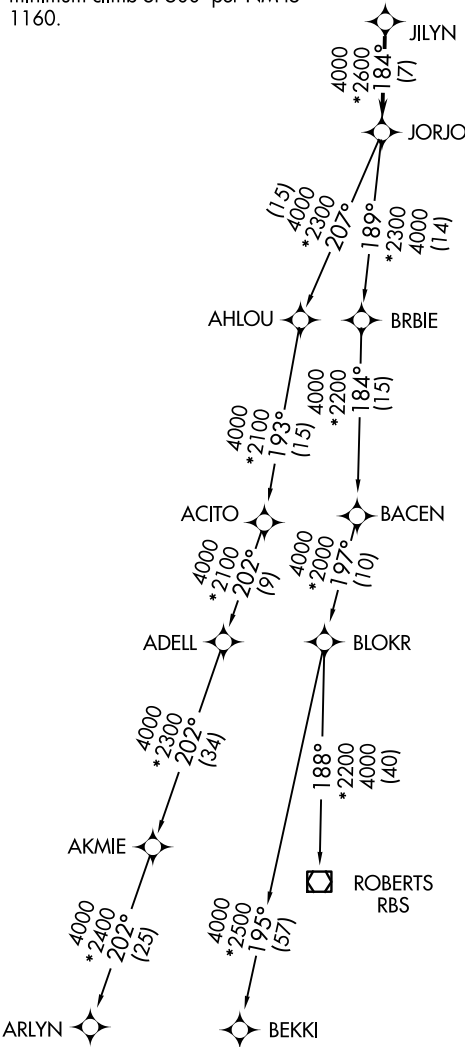
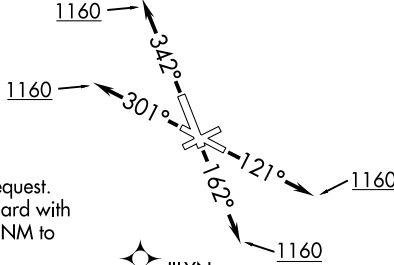
CHICAGO/PROSPECT HEIGHTS/WHEELING, ILLINOIS

ATIS 124.2
 GND CON 121.7
 EXECUTIVE TOWER * 119.9 (CTAF)
 CHICAGO DEP CON 120.55 306.925

TOP ALTITUDE:
3000

TAKEOFF MINIMUMS

Rwy 6, 24: NA - Airport request.
 Rwy 12, 16, 30, 34: Standard with minimum climb of 500' per NM to 1160.



DEPARTURE ROUTE DESCRIPTION

TAKEOFF RWY 12: Climb heading 121° or as assigned by ATC to at or above 1160, expect vectors to JILYN. Thence . . .
TAKEOFF RWY 16: Climb heading 162° or as assigned by ATC to at or above 1160, expect vectors to JILYN. Thence . . .
TAKEOFF RWY 30: Climb heading 301° or as assigned by ATC to at or above 1160, expect vectors to JILYN. Thence . . .
TAKEOFF RWY 34: Climb heading 342° or as assigned by ATC to at or above 1160, expect vectors to JILYN. Thence . . .
 . . . on track 184° to JORJO, then on (transition), maintain 3000, expect filed altitude 10 minutes after departure.

AKMIE TRANSITION (JORJO5.AKMIE)
ARLYN TRANSITION (JORJO5.ARLYN)
BEKKI TRANSITION (JORJO5.BEKKI)
ROBERTS TRANSITION (JORJO5.RBS)

- NOTE: RNAV 1.
- NOTE: RADAR required.
- NOTE: DME/DME/IRU or GPS required.
- NOTE: TURBOJET depatures maintain 250K until advised by ATC.
- NOTE: AKMIE transition: for aircraft inbound to BMI, SPI, or PIA, or as assigned by ATC.
- NOTE: ROBERTS transition: for aircraft inbound to CMI or STL, or as assigned by ATC.

NOTE: Chart not to scale.

JORJO FIVE DEPARTURE (RNAV)

(JORJO5.JORJO) 01FEB18

CHICAGO/PROSPECT HEIGHTS/WHEELING, ILLINOIS
CHICAGO EXEC (PWK)

EC-3, 11 JUN 2026 to 09 JUL 2026

EC-3, 11 JUN 2026 to 09 JUL 2026