

(MONKZ5.MONKZ) 21112

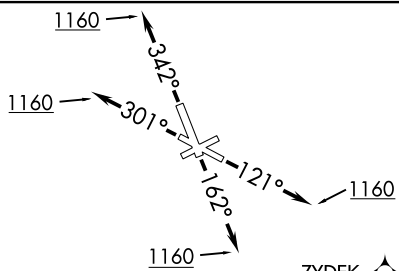
MONKZ FIVE DEPARTURE (RNAV)

AL-5028 (FAA)

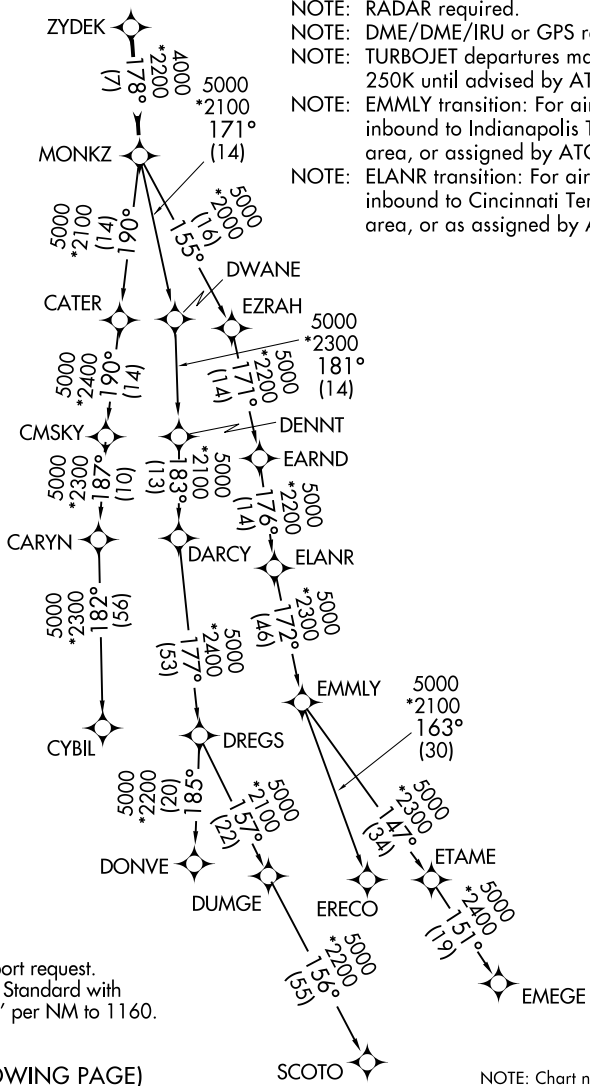
CHICAGO EXEC (PWK)
CHICAGO/PROSPECT HEIGHTS/WHEELING, ILLINOIS

TOP ALTITUDE:
3000

ATIS 124.2
GND CON 121.7
EXECUTIVE TOWER * 119.9 (CTAF)
CHICAGO DEP CON 120.55 306.925



- NOTE: RNAV 1.
- NOTE: RADAR required.
- NOTE: DME/DME/IRU or GPS required.
- NOTE: TURBOJET departures maintain 250K until advised by ATC.
- NOTE: EMMLY transition: For aircraft inbound to Indianapolis Terminal area, or assigned by ATC.
- NOTE: ELANR transition: For aircraft inbound to Cincinnati Terminal area, or as assigned by ATC.



TAKEOFF MINIMUMS
Rwys 6, 24: NA - Airport request.
Rwys 12, 16, 30, 34: Standard with minimum climb of 500' per NM to 1160.

(NARRATIVE ON FOLLOWING PAGE)

NOTE: Chart not to scale.

EC-3, 11 JUN 2026 to 09 JUL 2026

EC-3, 11 JUN 2026 to 09 JUL 2026

MONKZ FIVE DEPARTURE (RNAV)
(MONKZ5.MONKZ) 01FEB18

CHICAGO/PROSPECT HEIGHTS/WHEELING, ILLINOIS
CHICAGO EXEC (PWK)