

WAAS CH <b>45627</b> <b>W16A</b>	APP CRS <b>161°</b>	Rwy Ldg TDZE Apt Elev	<b>5001</b> <b>643</b> <b>647</b>
--	------------------------	-----------------------------	---

# RNAV (GPS) RWY 16

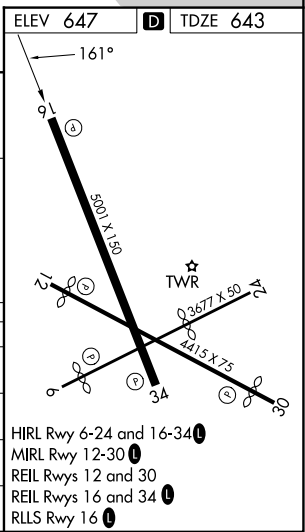
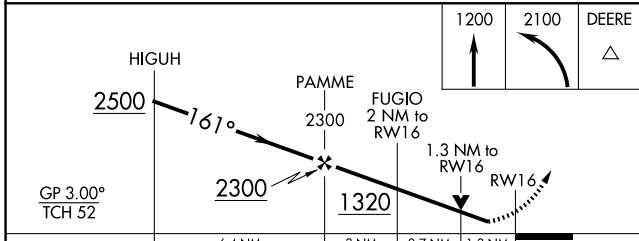
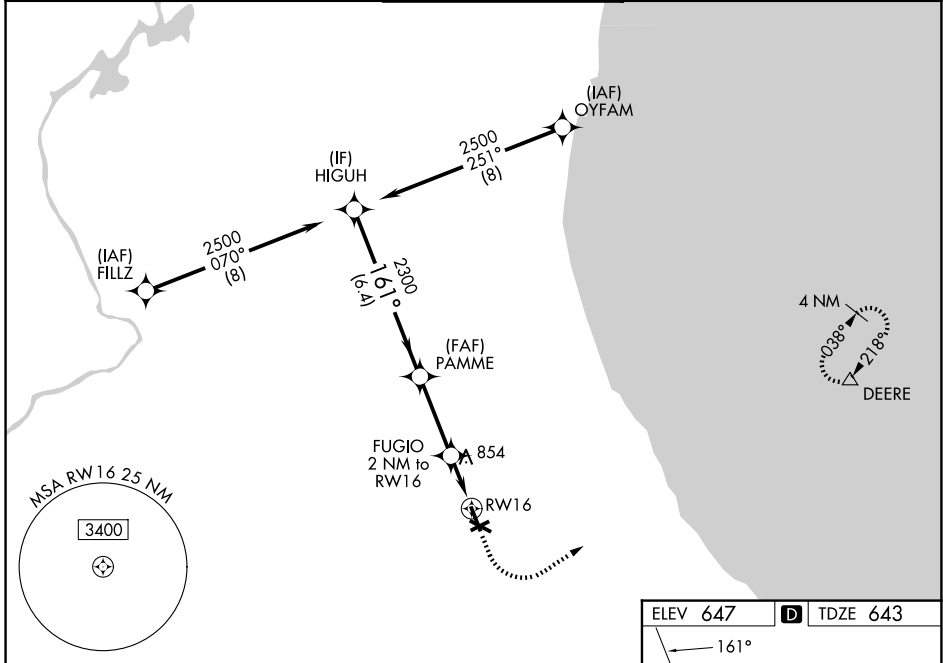
CHICAGO EXEC (PWK)

RNP APCH - GPS.

**⚠** Rwy 16 helicopter visibility reduction below 3/4 SM NA.  
**⚠** For uncompensated Baro-VNAV systems, LNAV/VNAV NA below -19°C or above 54°C. Circling Rwy 6, 12, 24, 30 NA at night.

MISSED APPROACH: Climb to 1200 then climbing left turn to 2100 direct DEERE and hold.

ATIS <b>124.2</b>	CHICAGO APP CON <b>120.55 306.925</b>	EXECUTIVE TOWER ★ <b>119.9 (CTAF) 0</b>	GND CON <b>121.7</b>	UNICOM <b>122.95</b>
----------------------	--	--	-------------------------	-------------------------



CATEGORY	A	B	C	D
LPV DA		927-7/8	284 (300-7/8)	
LNAV/VNAV DA		1083-1 1/4	440 (500-1 1/4)	
LNAV MDA	1120-1	477 (500-1)	1120-1 3/8	477 (500-1 3/8)
CIRCLING	1140-1 493 (500-1)	1160-1 513 (600-1)	1200-1 1/2 553 (600-1 1/2)	1460-2 3/4 813 (900-2 3/4)

EC-3, 11 JUN 2026 to 09 JUL 2026

EC-3, 11 JUN 2026 to 09 JUL 2026