

# CONRA FOUR DEPARTURE

9Z02 UNR 60 01 2026 UNR 11 '8-CC

**DEPARTURE ROUTE DESCRIPTION**

TAKEOFF RUNWAYS 16, 34: Climb on assigned heading for RADAR vectors to CONRA INT thence. . . .

. . . on assigned transition. Maintain 3500, expect filed altitude 10 minutes after departure.

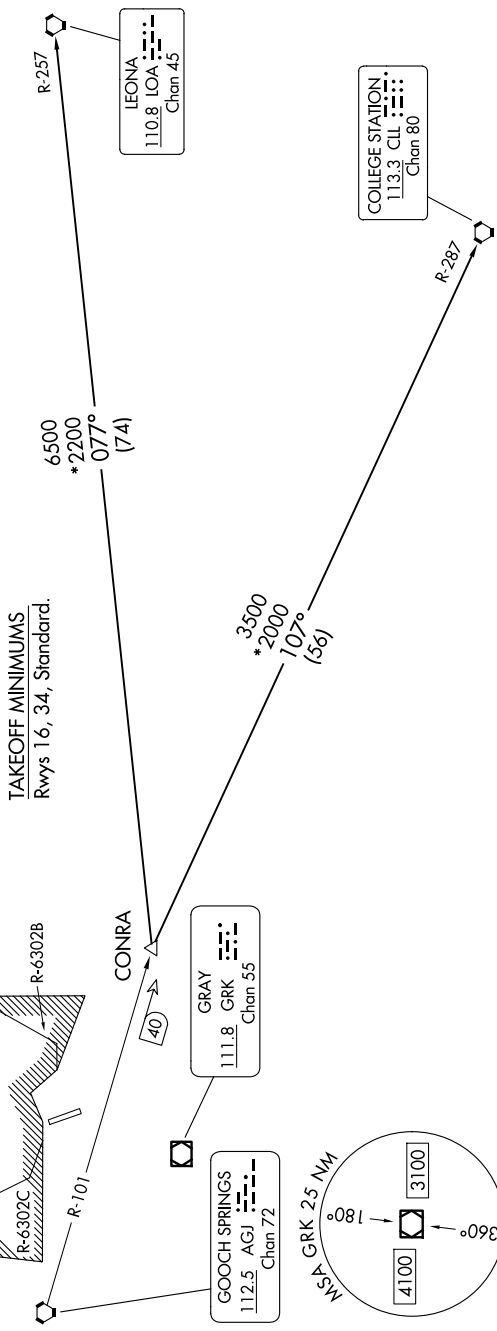
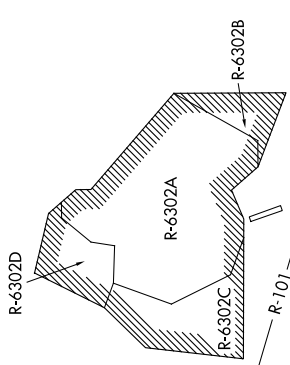
**COLLEGE STATION TRANSITION (CONRA4.CLL):** From over CONRA INT on CLL R-287 to CLL VORTAC.

**LEONA TRANSITION (CONRA4.LOA):** From over CONRA INT on LOA R-257 to LOA VORTAC.

**TOP ALTITUDE:**  
**3500**

RADAR required.

GRAY DEP CON  
120.075 323.15  
CLNC DEL  
225.4  
GND CON  
133.85 225.4  
HOOD TOWER\*  
119.65 269.45



# CONRA FOUR DEPARTURE

SC-3, 11 JUN 2026 to 09 JUL 2026

NOTE: Chart not to scale.