

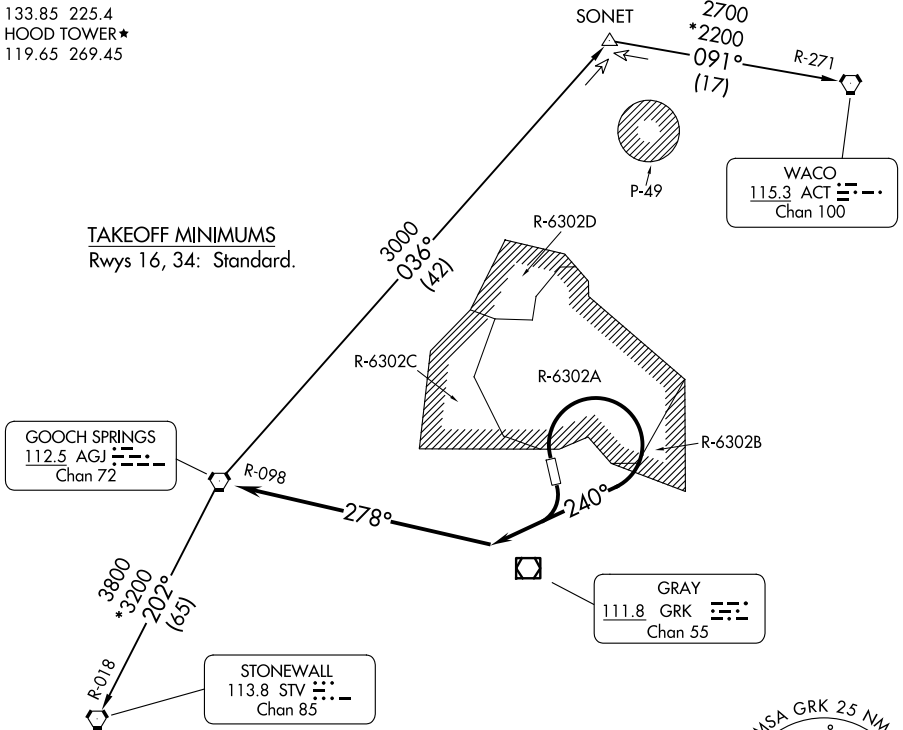
# LAMPS NINE DEPARTURE

GRAY DEP CON  
120.075 323.15  
CLNC DEL  
225.4  
GND CON  
133.85 225.4  
HOOD TOWER★  
119.65 269.45

RADAR required.

**TOP ALTITUDE:  
ASSIGNED BY ATC**

**TAKEOFF MINIMUMS**  
Rwys 16, 34: Standard.



NOTE: WACO Transition for aircraft inbound to terminal area airports.

NOTE: Chart not to scale.

## DEPARTURE ROUTE DESCRIPTION

**TAKEOFF RUNWAYS 16, 34:** Climbing right turn heading 240° to intercept and proceed on AGJ R-098. Thence . . . .

. . . . on assigned transition. Maintain ATC assigned altitude, expect filed altitude 10 minutes after departure.

**STONEWALL TRANSITION (LAMPS9.STV):** From over AGJ VORTAC on AGJ R-202 and STV R-018 to STV VORTAC.

**WACO TRANSITION (LAMPS9.ACT):** From over AGJ VORTAC on AGJ R-036 to SONET INT, then on ACT R-271 to ACT VORTAC.

SC-3, 11 JUN 2026 to 09 JUL 2026

SC-3, 11 JUN 2026 to 09 JUL 2026