

LOC/DME I-EKI 110.3 Chan 40	APP CRS 312°	Rwy Ldg TDZE 43 Apt Elev 46	7510
---	------------------------	---	-------------

LOC RWY 31

CORPUS CHRISTI INTL (CRP)

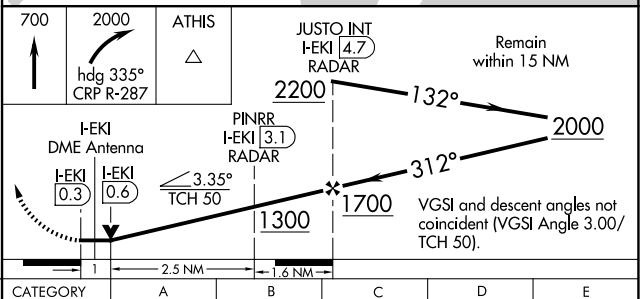
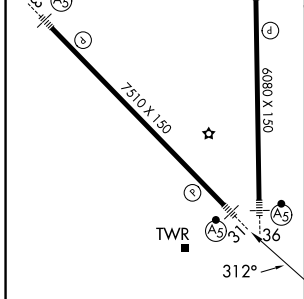
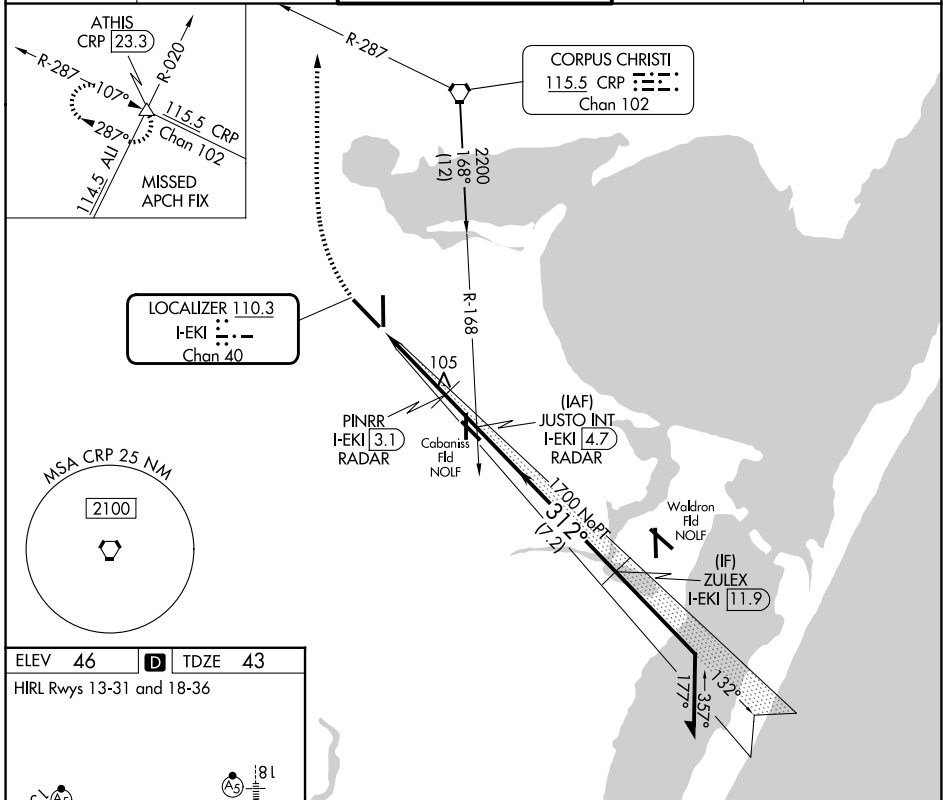
DME or RADAR required.
RADAR required for procedure entry at ZULEX.

⚠ For inop ALS, increase S-LOC 31 Cats C, D, and E visibility to 1 SM.

MALSRR
AS

MISSED APPROACH: Climb to 700 then climbing right turn to 2000 on heading 335° and CRP VORTAC R-287 to ATHIS INT/CRP VORTAC 23.3 DME and hold.

ATIS 126.8	CORPUS APP CON 120.9 348.725	CORPUS TOWER 119.4 257.8	GND CON 121.9 269.15	CLNC DEL 118.55
----------------------	--	------------------------------------	--------------------------------	---------------------------



FAF to MAP 5.1 NM					
CATEGORY	A	B	C	D	E
S-31	400-1/2	357 (400-1/2)	400-5/8	357 (400-5/8)	
CIRCLING	500-1 454 (500-1)	780-1 734 (800-1)	820-2 1/4 774 (800-2 1/4)	820-2 1/2 774 (800-2 1/2)	820-2 3/4 774 (800-2 3/4)

SC-3, 11 JUN 2026 to 09 JUL 2026

SC-3, 11 JUN 2026 to 09 JUL 2026