


RNAV (RNP) Z RWY 36

CORPUS CHRISTI INTL (CRP)

APP CRS 355°	Rwy Ldg TDZE Apt Elev	6080 40 44
------------------------	-----------------------------	---------------------------------------

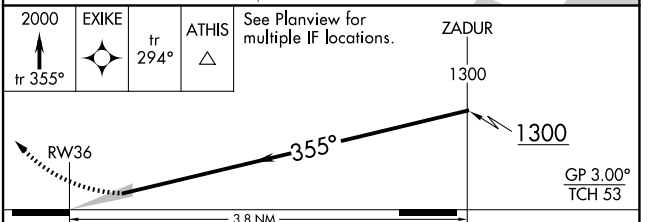
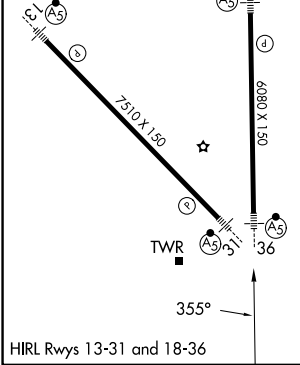
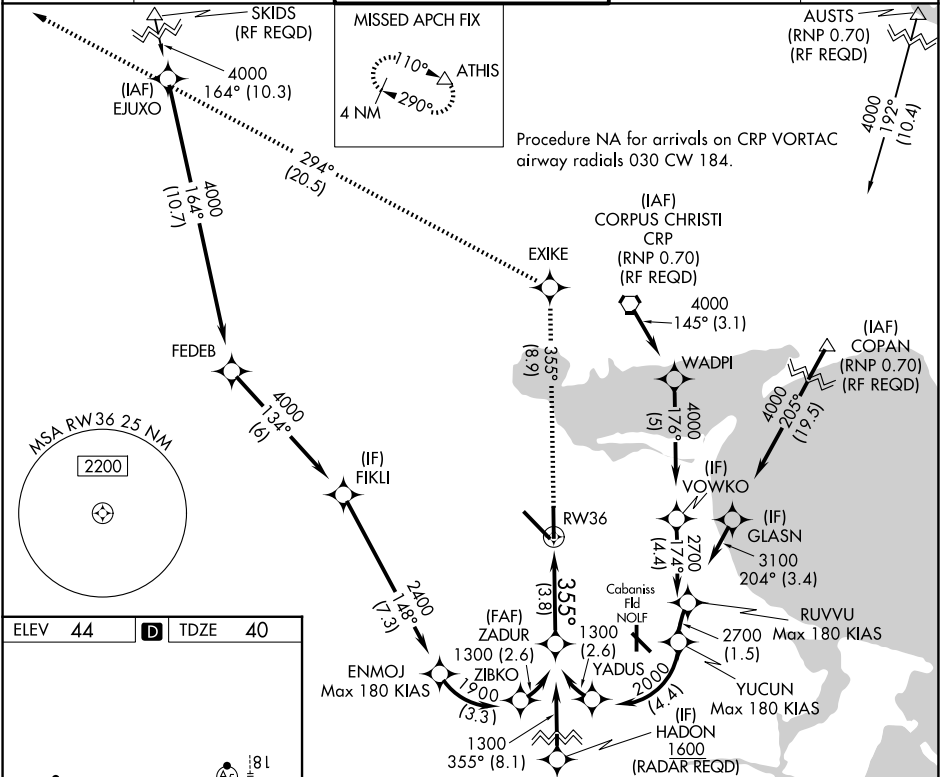
▼ For uncompensated Baro-VNAV systems, procedure NA below -1°C (-31°F) or above 54°C (130°F). GPS required. For inop MALSR, increase RNP 0.11 visibility all Cats to RVR 4000. For inop MALSR, increase RNP 0.30 visibility all Cats to RVR 5900.

MALSR



MISSED APPROACH: Climb to 2000 on track 355° to EXIKE and on track 294° to ATHIS and hold.

ATIS 126.8	CORPUS APP CON 120.9 348.725	CORPUS TOWER 119.4 257.8	GND CON 121.9 269.15	CLNC DEL 118.55
----------------------	--	------------------------------------	--------------------------------	---------------------------



CATEGORY	A	B	C	D
RNP 0.11 DA		290/24	250 (300-½)	
RNP 0.30 DA		400/34	360 (400-½)	

AUTHORIZATION REQUIRED

SC-3, 11 JUN 2026 to 09 JUL 2026

SC-3, 11 JUN 2026 to 09 JUL 2026