

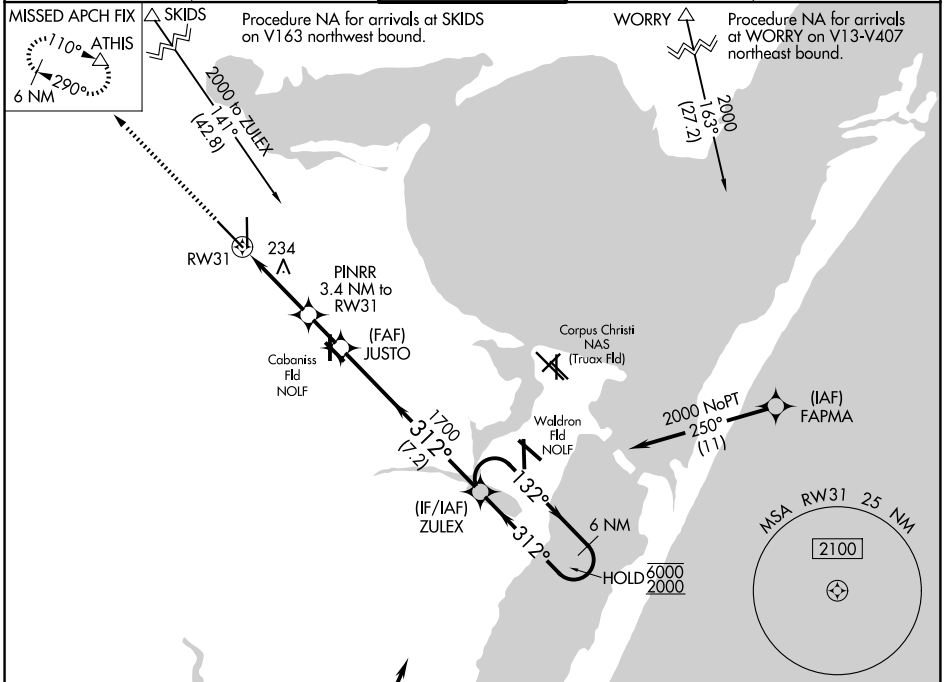
RNAV (GPS) X RWY 31

CORPUS CHRISTI INTL (CRP)

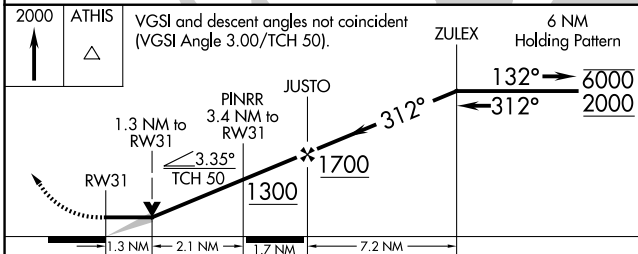
APP CRS	Rwy Ldg	7510
312°	TDZE	43
	Apt Elev	46

RNP APCH - GPS	MALSR	MISSED APPROACH: Climb to 2000 direct ATHIS and hold.
For inop ALS, increase LNAV Cat E visibility to 1½ mile.		

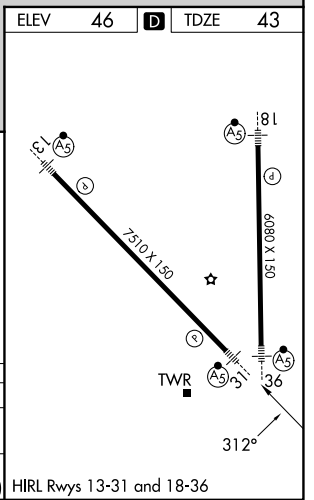
ATIS 126.8	CORPUS APP CON 120.9 348.725	CORPUS TOWER 119.4 257.8	GND CON 121.9 269.15	CLNC DEL 118.55
----------------------	--	---	--------------------------------	---------------------------



2000	ATHIS	Procedure NA for arrivals at SOLON on V13-20-163 southbound.
		VGSI and descent angles not coincident (VGSI Angle 3.00/TCH 50).



CATEGORY	A	B	C	D	E
LNAV MDA	500-½	457 (500-½)	500-¾	457 (500-¾)	
CIRCLING	500-1 454 (500-1)	780-1 734 (800-1)	820-2¼ 774 (800-2¼)	820-2½ 774 (800-2½)	820-2¾ 774 (800-2¾)



SC-3, 11 JUN 2026 to 09 JUL 2026

SC-3, 11 JUN 2026 to 09 JUL 2026