

VORTAC LFT 109.8 Chan 35	APP CRS 145°	Rwy Ldg TDZE 24 Apt Elev 24
---------------------------------------	------------------------	---

VOR or TACAN RWY 17

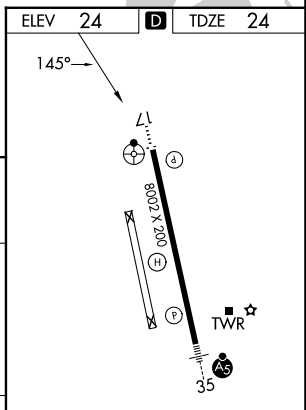
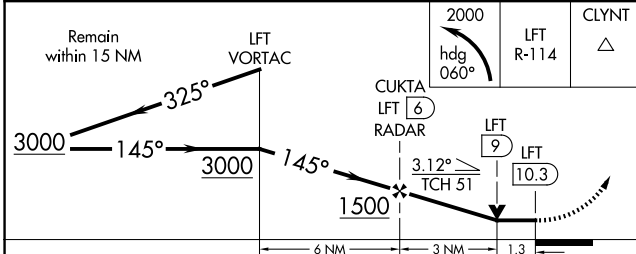
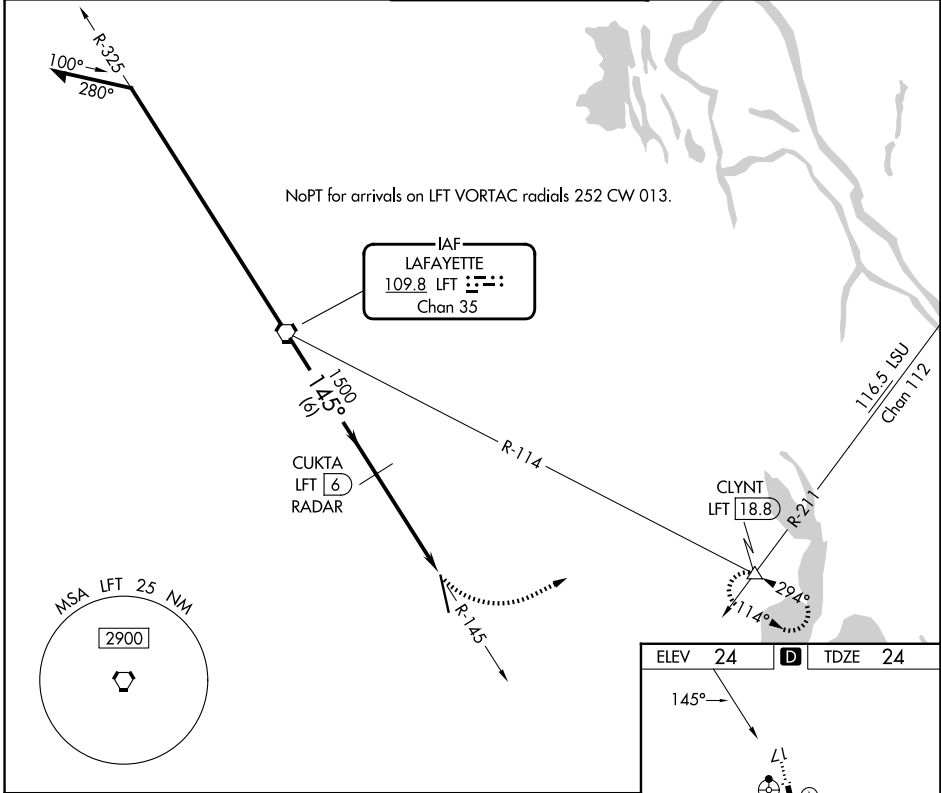
ACADIANA RGNL (A.R.A.)

▼ Circling NA to Rwy's 17W and 35W.
 ▲ DME or RADAR required.
 For inop ALS, increase S-17 Cat E visibility to 1 3/8 mile.

ODALS

 MISSED APPROACH: Climbing left turn to 2000 on heading 060° and LFT VORTAC R-114 to CLYNT INT/18.8 DME and hold.

ASOS 133.325	LAFAYETTE APP CON★ 121.1 268.7	ACADIANA TOWER★ 125.0 (CTAF) 0 239.3	GND CON 121.7	UNICOM 122.95
------------------------	--	--	-------------------------	-------------------------



CATEGORY	A	B	C	D	E
S-17	500-3/4	476 (500-3/4)	500-1 1/4	476 (500-1 1/4)	
CIRCLING	500-1	476 (500-1)	600-1 1/2 576 (600-1 1/2)	680-2 656 (700-2)	900-3 876 (900-3)

FAF to MAP 4.3 NM					
Knots	60	90	120	150	180
Min:Sec	4:18	2:52	2:09	1:43	1:26

SC-4, 11 JUN 2026 to 09 JUL 2026

SC-4, 11 JUN 2026 to 09 JUL 2026