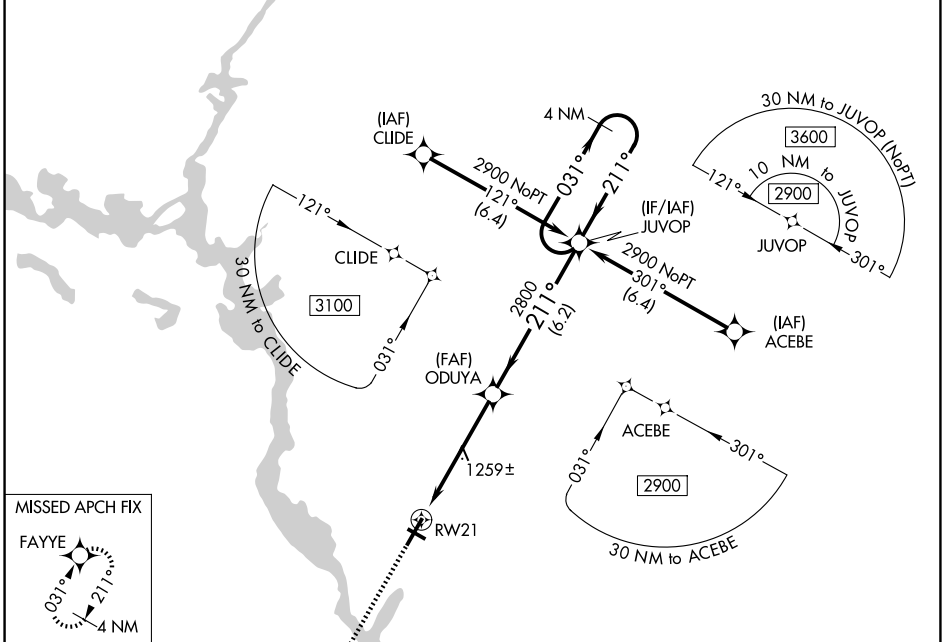


WAAS CH <b>86511</b> <b>W21A</b>	APP CRS <b>211°</b>	Rwy Ldg 6028	TDZE 1110	Apt Elev 1110
--	------------------------	-----------------	--------------	------------------

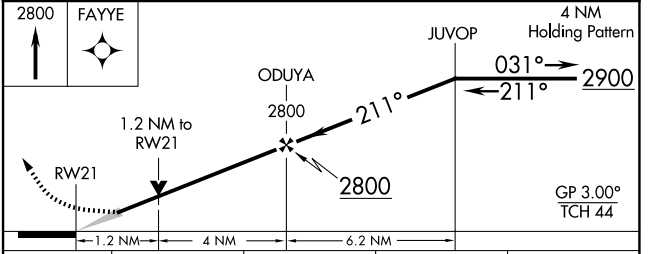
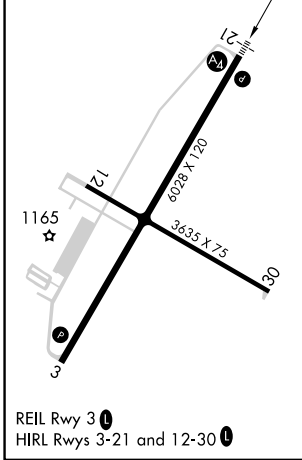
# RNAV (GPS) RWY 21

STEVENS POINT MUNI (STE)

RNP APCH - GPS.		MALS	MISSED APPROACH: Climb to 2800 direct FAYYE and hold.
<p>▼ For uncompensated Baro-VNAV systems, LNAV/VNAV NA below -17°C or above 54°C. Inop table does not apply to LPV all Cats. ▲ For inop ALS, increase LNAV Cat C and D visibility to 1½ SM.</p>			
AWOS-3 <b>119.275</b>	MINNEAPOLIS CENTER <b>124.4 317.7</b>	UNICOM <b>122.7 (CTAF)</b>	



ELEV 1110	TDZE 1110
-----------	-----------



CATEGORY	A	B	C	D
LPV DA		1360-¾	250 (300-¾)	
LNAV/VNAV DA		1457-¾	347 (400-¾)	
LNAV MDA	1520-¾	410 (500-¾)	1520-1	410 (500-1)
CIRCLING	1580-1 470 (500-1)	1600-1 490 (500-1)	1860-2¼ 750 (800-2¼)	1860-2½ 750 (800-2½)

EC-3, 11 JUN 2026 to 09 JUL 2026

EC-3, 11 JUN 2026 to 09 JUL 2026

REIL Rwy 3  
HIRL Rwy 3-21 and 12-30