

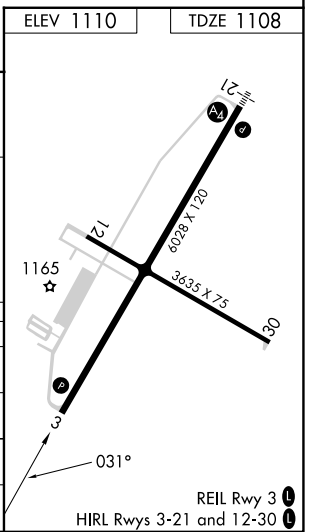
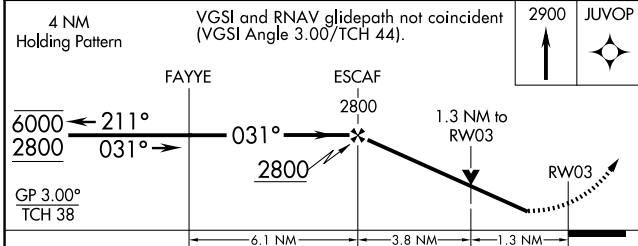
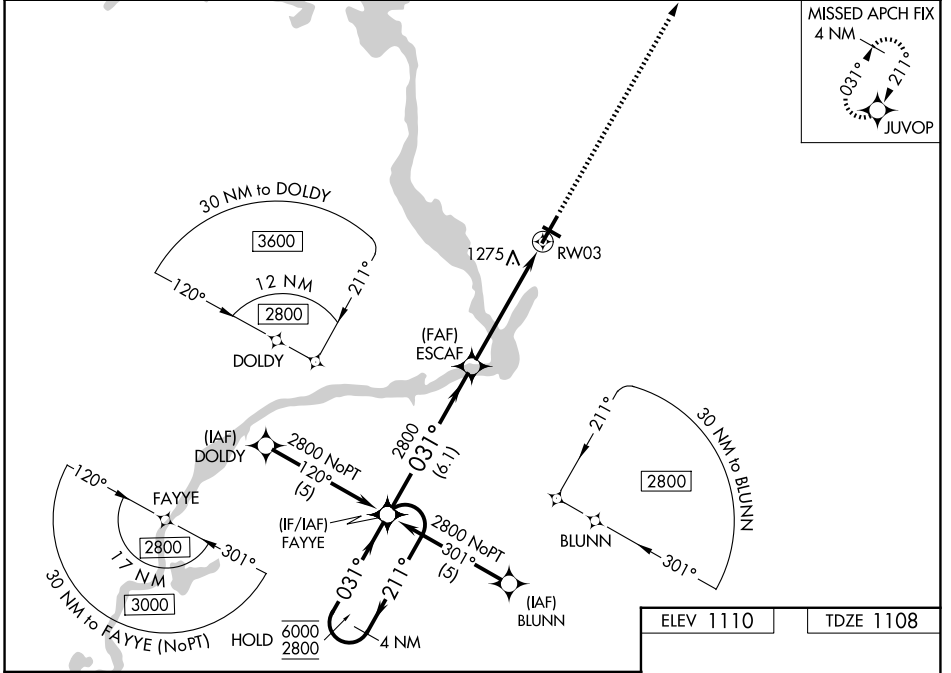
WAAS CH 77910 W03A	APP CRS 031°	Rwy Ldg TDZE Apt Elev	6028 1108 1110
--	------------------------	-----------------------------	---

RNAV (GPS) RWY 3

STEVENS POINT MUNI (STE)

RNP APCH - GPS.	MISSED APPROACH: Climb to 2900 direct JUVOP and hold.
<p>▼ Rwy 3 helicopter visibility reduction below $\frac{3}{4}$ SM NA.</p> <p>▲ For uncompensated Baro-VNAV systems, LNAV/VNAV NA below -17° C or above 54°C.</p>	

AWOS-3 119.275	MINNEAPOLIS CENTER 124.4 317.7	UNICOM 122.7 (CTAF) 0
--------------------------	--	---------------------------------



CATEGORY	A	B	C	D
LPV DA		1409- $\frac{7}{8}$	301 (300- $\frac{7}{8}$)	
LNAV/VNAV DA		1594- $1\frac{3}{8}$	486 (500- $1\frac{3}{8}$)	
LNAV MDA	1540-1	432 (500-1)	1540- $1\frac{1}{4}$	432 (500- $1\frac{1}{4}$)
CIRCLING	1580-1 470 (500-1)	1600-1 490 (500-1)	1860- $2\frac{1}{4}$ 750 (800- $2\frac{1}{4}$)	1860- $2\frac{1}{2}$ 750 (800- $2\frac{1}{2}$)

EC-3, 11 JUN 2026 to 09 JUL 2026

EC-3, 11 JUN 2026 to 09 JUL 2026