

LOC I-PTK 111.1	APP CRS 275°	Rwy Ldg 6520
		TDZE 974
		Apt Elev 981

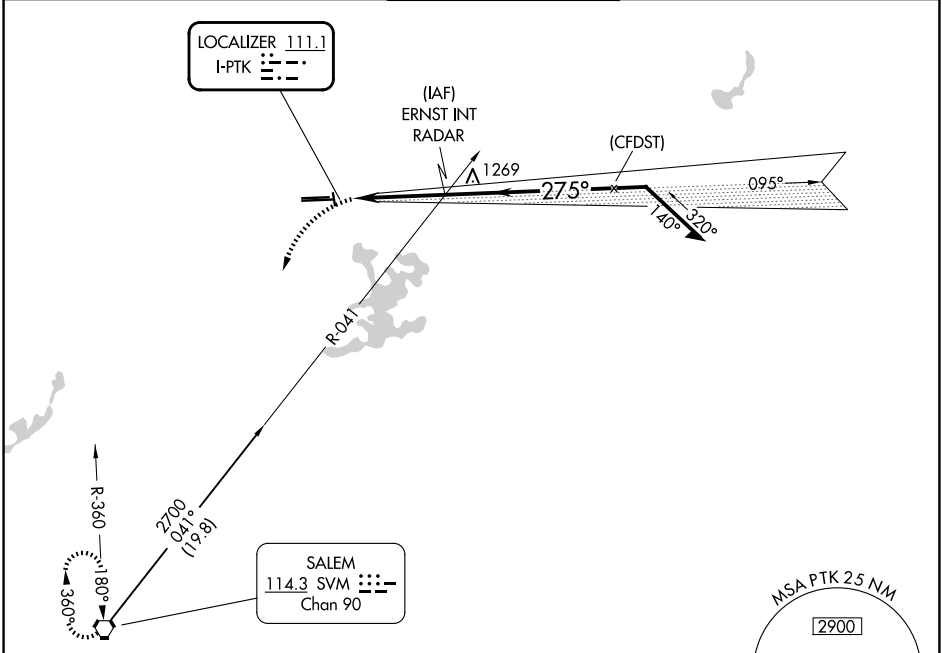
LOC BC RWY 27L

OAKLAND COUNTY INTL (PTK)

⚠ Circling Rwy 9L, 36 NA at night. When local altimeter setting not received, use DET altimeter setting and increase all MDAs 120 feet, increase S-LOC BC 27L visibility Cats C and D 3/8 SM, and Circling visibility Cats C and D 1/2 SM.

MISSED APPROACH:
Climbing left turn to 3000 direct SVM VORTAC and hold.

ATIS 125.025	DETROIT APP CON 132.35 284.0	PONTIAC TOWER ★ 120.5 (CTAF) 0	GND CON 121.9	UNICOM 122.95
------------------------	--	---	-------------------------	-------------------------

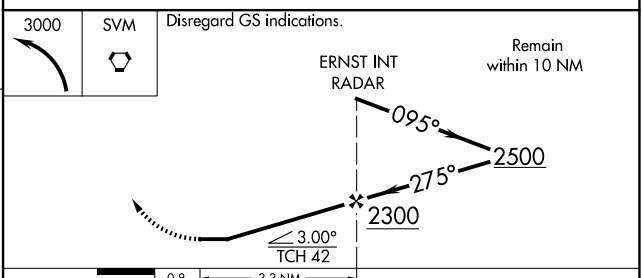
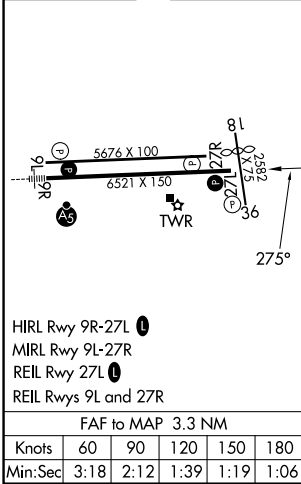


EC-1, 11 JUN 2026 to 09 JUL 2026

EC-1, 11 JUN 2026 to 09 JUL 2026

ELEV 981	D	TDZE 974
----------	----------	----------

BACK COURSE



CATEGORY	A	B	C	D
S-LOC 27L	1440-1	466 (500-1)	1440-1 3/8	466 (500-1 3/8)
CIRCLING	1500-1 519 (600-1)	1540-1 559 (600-1)	1640-1 3/4 659 (700-1 3/4)	1640-2 659 (700-2)