

EC-1, 11 JUN 2026 to 09 JUL 2026

Detroit DEP CON  
132.35 284.0  
ATIS  
125.025  
CINC DEL  
118.25  
GND CON  
121.9  
PONTIAC TOWER ★  
120.5 (CTAF)

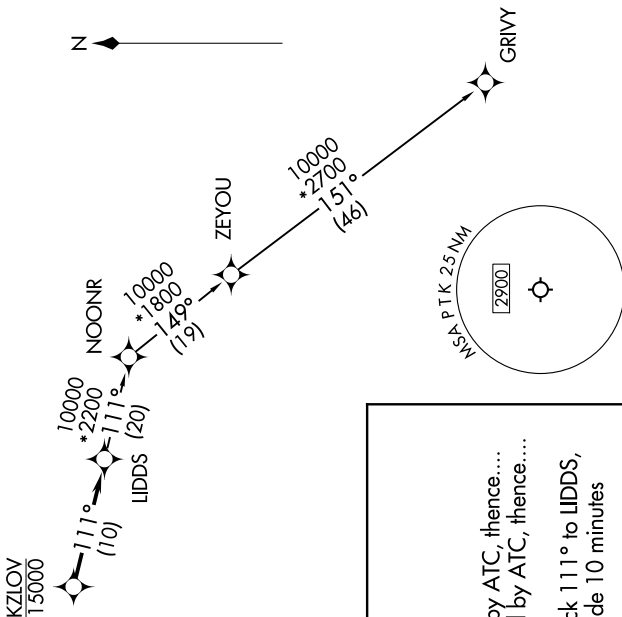
RNAV 1 - DME/DME/IRU or GPS.  
RADAR required.  
RADAR required for non-GPS equipped aircraft.



NOTE: Turbopjet departures at/above 10000, maintain 280K until advised by ATC.

**TAKEOFF MINIMUMS:**

Rwys 18, 36: NA - Environmental.  
Rwys 9L/R, 27L/R: Standard.



**DEPARTURE ROUTE DESCRIPTION**

TAKEOFF RUNWAYS 9L/R: Climb on heading 095° or as assigned by ATC, thence....  
TAKEOFF RUNWAYS 27L/R: Climb on heading 275° or as assigned by ATC, thence....

....for RADAR vectors to cross KZLOV at or below 15000, then on track 111° to LIDDS, then on (transition). Maintain ATC assigned altitude, expect filed altitude 10 minutes after departure.

GRIVY TRANSITION (LIDDS4.GRIVY):

NOTE: Chart not to scale.

EC-1, 11 JUN 2026 to 09 JUL 2026