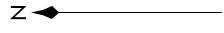
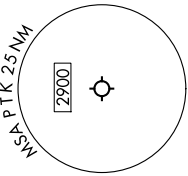


EC-1, 11 JUN 2026 to 09 JUL 2026

RNAV 1 - DME/DME/IRU or GPS.  
RADAR required.

ATIS 125.025  
CLNC DEL 118.25  
GND CON 121.9  
PONTIAC TOWER \* 120.5 (CTAF)  
DETROIT DEP CON 132.35 284.0

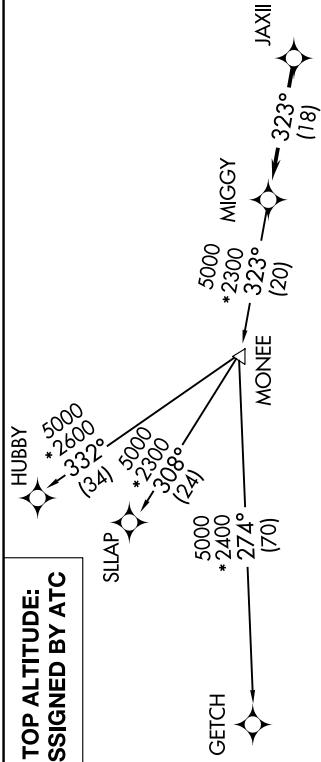


NOTE: Chart not to scale.

TAKEOFF MINIMUMS:

Rwys 18, 36: NA - Environmental.  
Rwys 9L/R, 27L/R: Standard.

**TOP ALTITUDE:  
ASSIGNED BY ATC**



NOTE: Jet departures at/above 10000, maintain 280K until advised by ATC.  
NOTE: GETCH TRANSITION: For use by KMKE area arrivals only, or as assigned by ATC.

**DEPARTURE ROUTE DESCRIPTION**

TAKEOFF RUNWAYS 9L/R: Climb on heading 095° or as assigned by ATC, thence....  
TAKEOFF RUNWAYS 27L/R: Climb on heading 275° or as assigned by ATC, thence....  
....for RADAR vectors to JAXII, then on track 323° to MIGGY, then on (transition). Maintain 17000 or as assigned by ATC, expect filed altitude 10 minutes after departure.

GETCH TRANSITION (MIGGY3.GETCH):  
HUBBY TRANSITION (MIGGY3.HUBBY):  
SILAP TRANSITION (MIGGY3.SILAP):

EC-1, 11 JUN 2026 to 09 JUL 2026