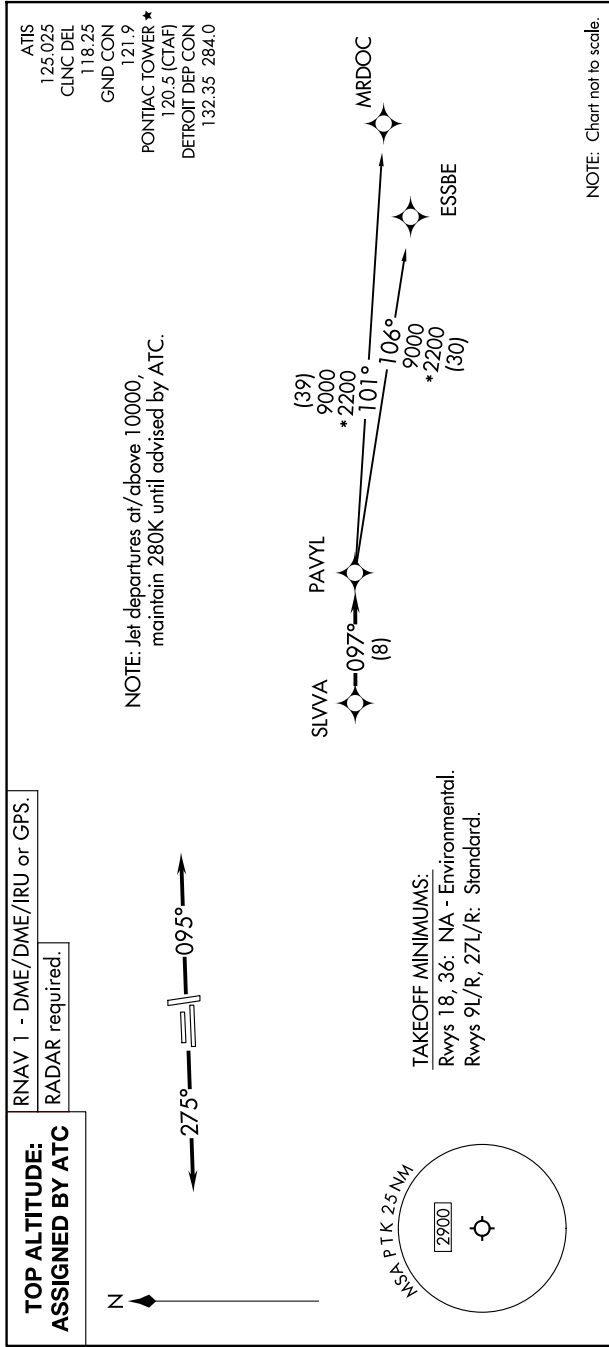


EC-1, 11 JUN 2026 to 09 JUL 2026



NOTE: Chart not to scale.

DEPARTURE ROUTE DESCRIPTION

TAKEOFF RUNWAYS 9L/R: Climb on heading 095° or as assigned by ATC, thence....  
TAKEOFF RUNWAYS 27L/R: Climb on heading 275° or as assigned by ATC, thence....

....for RADAR vectors to SLVVA, then on track 097° to PAVYL, then on (transition). Maintain 17000 or as assigned by ATC, expect filed altitude 10 minutes after departure.

ESSBE TRANSITION (PAVYL3.ESSBE):  
MRDOC TRANSITION (PAVYL3.MRDOC):

EC-1, 11 JUN 2026 to 09 JUL 2026