

WAAS CH 90415 W09A	APP CRS 095°	Rwy Ldg 6520 TDZE 981 Apt Elev 981
--	------------------------	---


RNAV (GPS) RWY 9R

OAKLAND COUNTY INTL (PTK)

RNP APCH - GPS

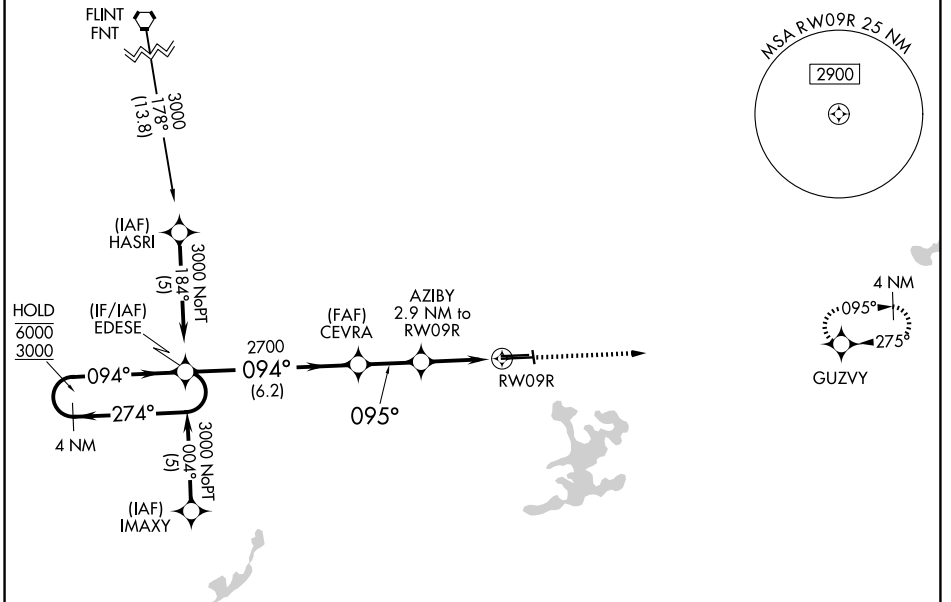
⚠ Circling Rwy 9L, 36 NA at night. For uncompensated Baro-VNAV systems, LNAV/VNAV NA below -21°C or above 54°C. For inop ALS, increase LPV all Cats visibility to RVR 4500. *RVR 1800 authorized with use of FD or AP or HUD to DA.

MALSR



MISSED APPROACH:
Climb to 3000 direct
GUZVY and hold.

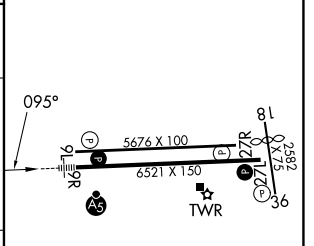
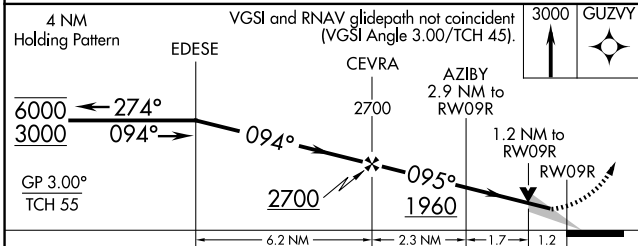
ATIS 125.025	DETROIT APP CON 132.35 284.0	PONTIAC TOWER ★ 120.5 (CTAF) 0	GND CON 121.9	UNICOM 122.95
------------------------	--	---	-------------------------	-------------------------



EC-1, 11 JUN 2026 to 09 JUL 2026

EC-1, 11 JUN 2026 to 09 JUL 2026

ELEV 981	D	TDZE 981
----------	----------	----------



CATEGORY	A	B	C	D
LPV DA*		1181/24	200 (200-½)	
LNAV/ VNAV		1420/40	439 (500-¾)	
LNAV MDA	1420/24	439 (500-½)	1420/40	439 (500-¾)
CIRCLING	1540-1 559 (600-1)	1560-1 579 (600-1)	1640-1¾ 659 (700-1¾)	1640-2 659 (700-2)

HIRL Rwy 9R-27L **0**
MIRL Rwy 9L-27R
REIL Rwy 27L **0**
REIL Rws 9L and 27R