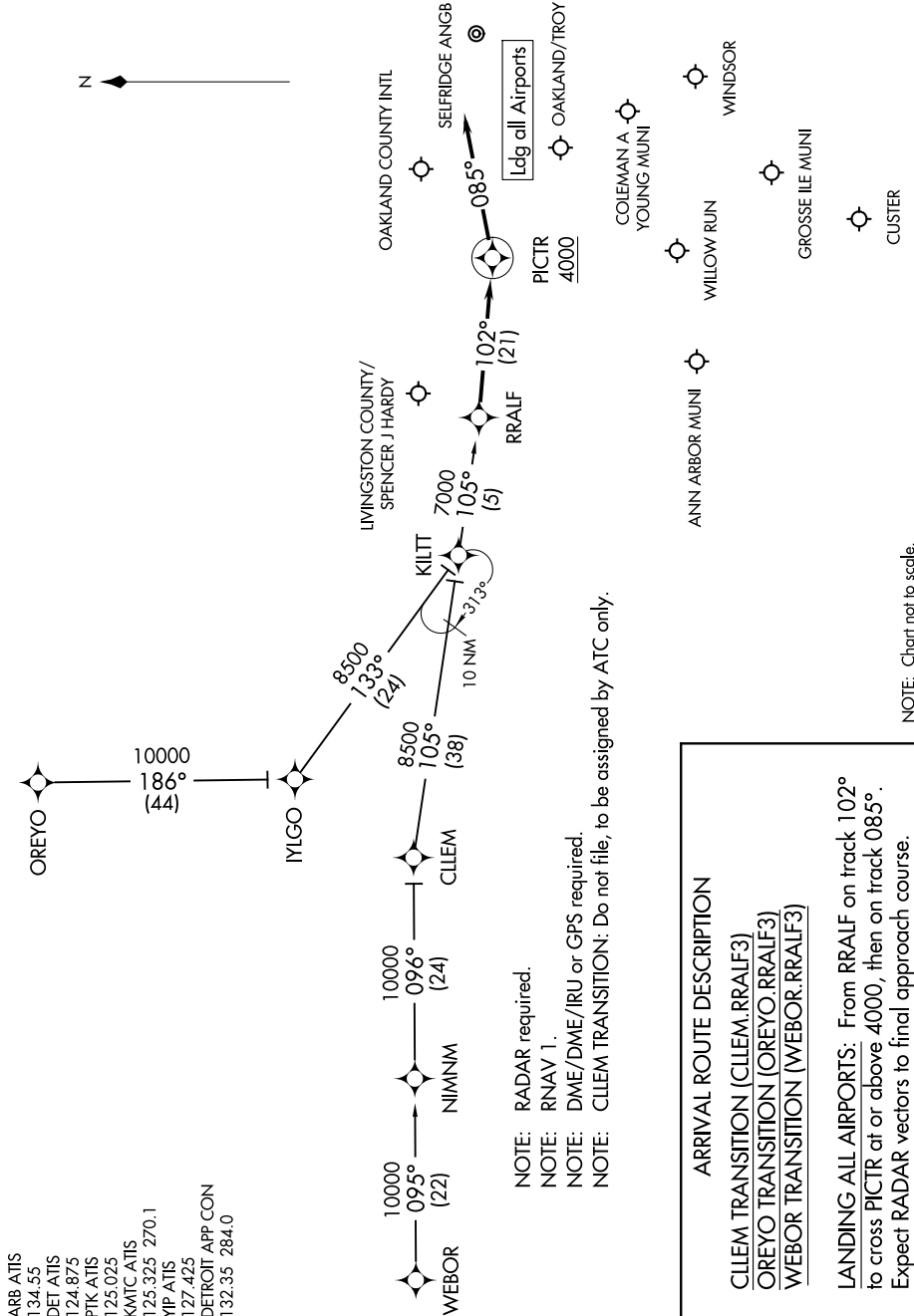


EC-1, 11 JUN 2026 to 09 JUL 2026



- ARB ATIS 134.55
- DET ATIS 124.875
- PTK ATIS 125.025
- KMTC ATIS 125.325 270.1
- YIP ATIS 127.425
- DETROIT APP CON 132.35 284.0

RRALF THREE ARRIVAL (RNAV)

- NOTE: RADAR required.
- NOTE: RNAV 1.
- NOTE: DME/DME/IRU or GPS required.
- NOTE: CLEEM TRANSITION: Do not file, to be assigned by ATC only.

ARRIVAL ROUTE DESCRIPTION

CLEEM TRANSITION (CLEEM.RRALF3)
OREYO TRANSITION (OREYO.RRALF3)
WEBOR TRANSITION (WEBOR.RRALF3)

LANDING ALL AIRPORTS: From RRALF on track 102° to cross PICTR at or above 4000, then on track 085°. Expect RADAR vectors to final approach course.

NOTE: Chart not to scale.

EC-1, 11 JUN 2026 to 09 JUL 2026