

WAAS CH 77909	APP CRS W27A 269°	Rwy Idg TDZE Apt Elev	5503 387 387
-------------------------	---------------------------------------	-----------------------------	-----------------------------------------

RNAV (GPS) RWY 27

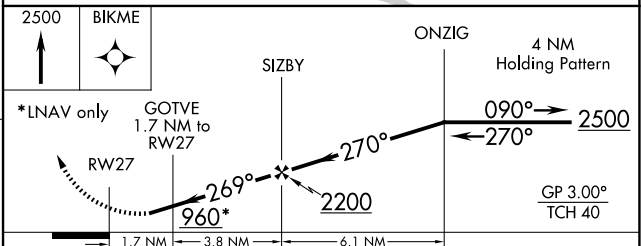
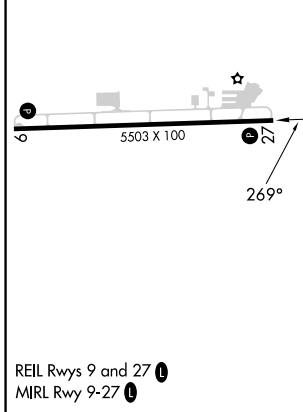
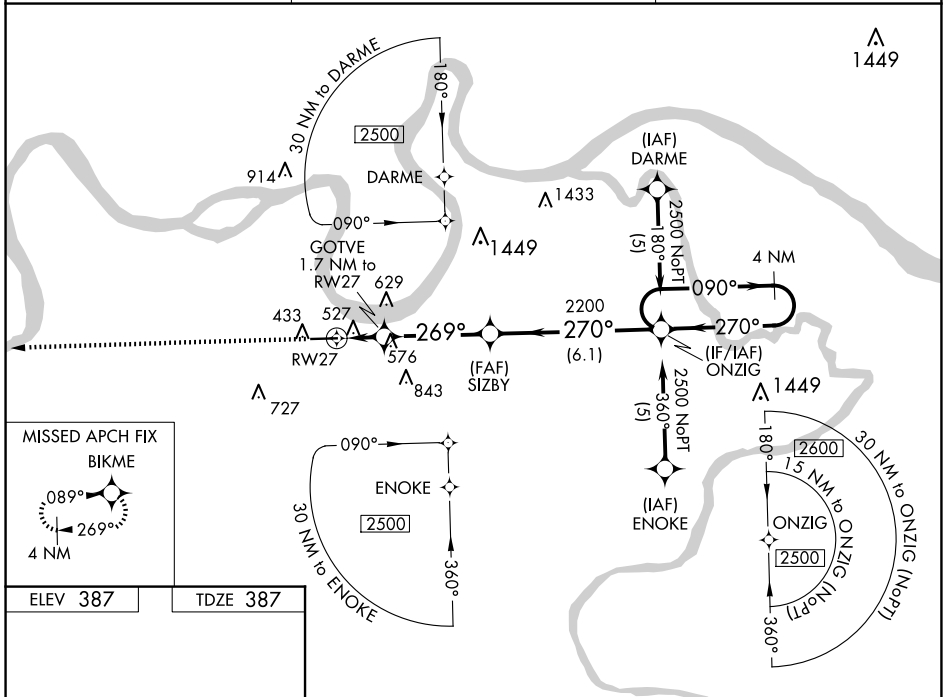
HENDERSON CITY-COUNTY (E.H.R.)

RNP APCH.

Baro-VNAV NA when using Evansville altimeter setting. For uncompensated Baro-VNAV systems, LNAV/VNAV NA below -15°C or above 48°C. Rwy 27 helicopter visibility reduction below 3/4 SM NA. When local altimeter setting not received, use Evansville altimeter setting and increase all DA 41 feet and all MDA 60 feet and LPV all Cats, LNAV/VNAV all Cats and LNAV Cats C/D visibilities 1/4 mile.

MISSED APPROACH: Climb to 2500 direct BIKME and hold.

AWOS-3PT 118.85	EVANSVILLE APP CON ★ 124.025 257.8	UNICOM 122.8 (CTAF) 0
---------------------------	----------------------------------------------	----------------------------------------



CATEGORY	A	B	C	D
LPV DA		733-1 1/4	346 (400-1 1/4)	
LNAV/VNAV DA		827-1 1/2	440 (500-1 1/2)	
LNAV MDA	840-1	453 (500-1)	840-1 3/8 453 (500-1 3/8)	840-1 1/2 453 (500-1 1/2)

SE-1, 11 JUN 2026 to 09 JUL 2026

SE-1, 11 JUN 2026 to 09 JUL 2026