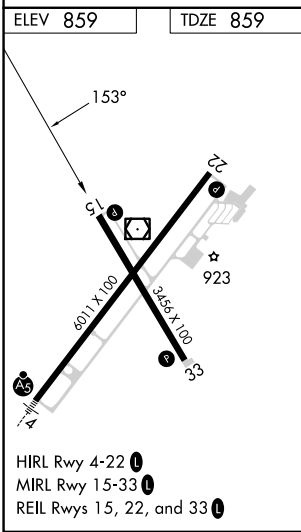
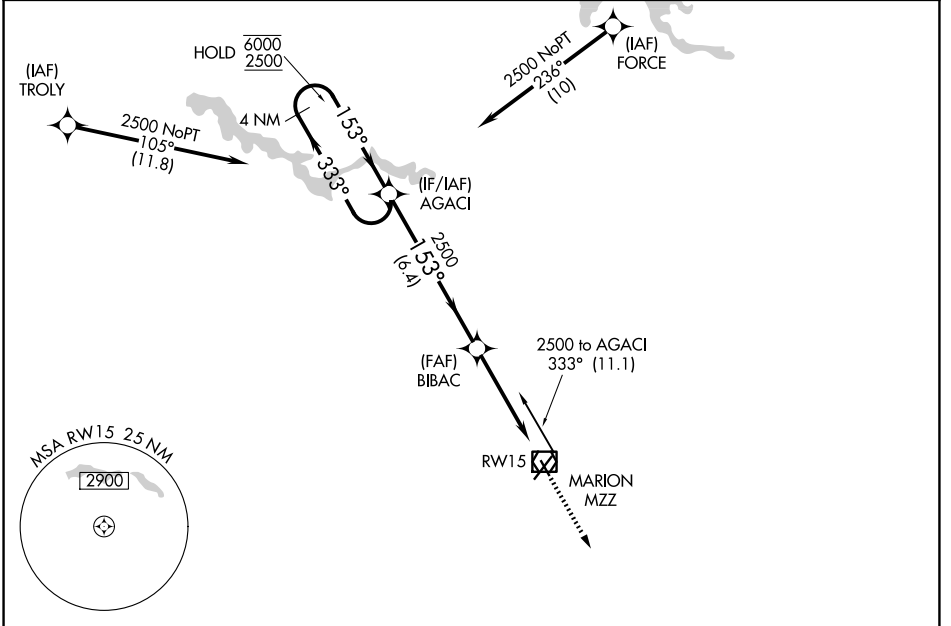


APP CRS 153°	Rwy Ldg 3456 TDZE 859 Apt Elev 859
------------------------	---

RNAV (GPS) RWY 15

MARION MUNI - MCKINNEY FLD (MZZ)

RNP APCH - GPS.		MISSED APPROACH: Climb to 2500 direct AKUYA and hold.			
Rwy 15 helicopter visibility reduction below 3/4 SM NA. Circling Rwy 15 NA at night.		AWOS-3 108.6	GRISSOM APP CON ★ 121.05 338.275	CLNC DEL 120.0	UNICOM 122.7 (CTAF) 0



4 NM Holding Pattern AGACI BIBAC		2500	AKUYA	
6000 ← 333° 153° → 2500		1.2 NM to RW15	RW15	
3.25° TCH 40				
6.4 NM 3.4 NM 1.2 NM				
CATEGORY	A	B	C	D
LNAV MDA	1300-1	441 (500-1)	1300-1 3/8	441 (500-1 3/8)
CIRCLING	1300-1 441 (500-1)	1320-1 461 (500-1)	1420-1 1/2 561 (600-1 1/2)	1500-2 641 (700-2)

EC-2, 11 JUN 2026 to 09 JUL 2026

EC-2, 11 JUN 2026 to 09 JUL 2026