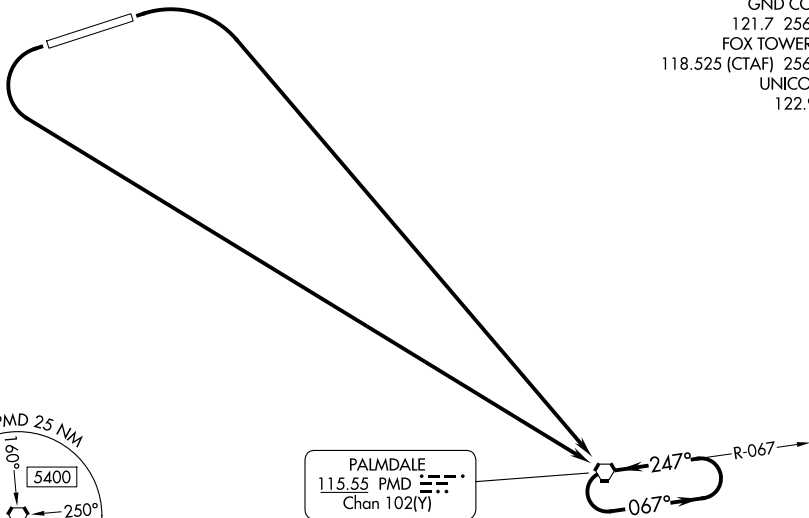


PALMDALE ONE DEPARTURE (OBSTACLE)

JOSHUA DEP CON
126.1 290.3
WJF ATIS
126.3
PMD ATIS
118.275
GND CON
121.7 256.9
FOX TOWER *
118.525 (CTAF) 256.9
UNICOM
122.95



SW-3, 11 JUN 2026 to 09 JUL 2026

SW-3, 11 JUN 2026 to 09 JUL 2026

TAKEOFF MINIMUMS

- Rwy 6: Standard with minimum climb of 240' per NM to 4800, or 3700-3 for climb in visual conditions.
- Rwy 24: Standard with minimum climb of 351' per NM to 4800, or 3700-3 for climb in visual conditions.

TAKEOFF OBSTACLE NOTES

Rwy 6: Trees beginning 1169' from DER, 590' right of centerline, up to 2374' MSL.

NOTE: Chart not to scale.

DEPARTURE ROUTE DESCRIPTION

TAKEOFF RUNWAY 6: Climbing right turn direct PMD VORTAC and hold, thence. . . .

TAKEOFF RUNWAY 24: Climbing left turn direct PMD VORTAC and hold, thence. . . .

. . . .continue climb-in-hold to cross PMD VORTAC at or above MCA/MEA for route of flight.

VCOA ALL RUNWAYS: Obtain ATC approval for VCOA when requesting IFR clearance. Climb in visual conditions to cross General WM J Fox Airfield at or above 5900 before proceeding on course.

PALMDALE ONE DEPARTURE (OBSTACLE)