

# HI-TACAN X RWY 32L

TACAN NLC Chan <b>80</b>	APCH CRS <b>322°</b>	Rwy Idg TDZE Arprt Elev <b>13,501</b> <b>227</b> <b>228</b>
-----------------------------	-------------------------	--

[USN]

LEMOORE NAS (REEVES FIELD) (KNLC)

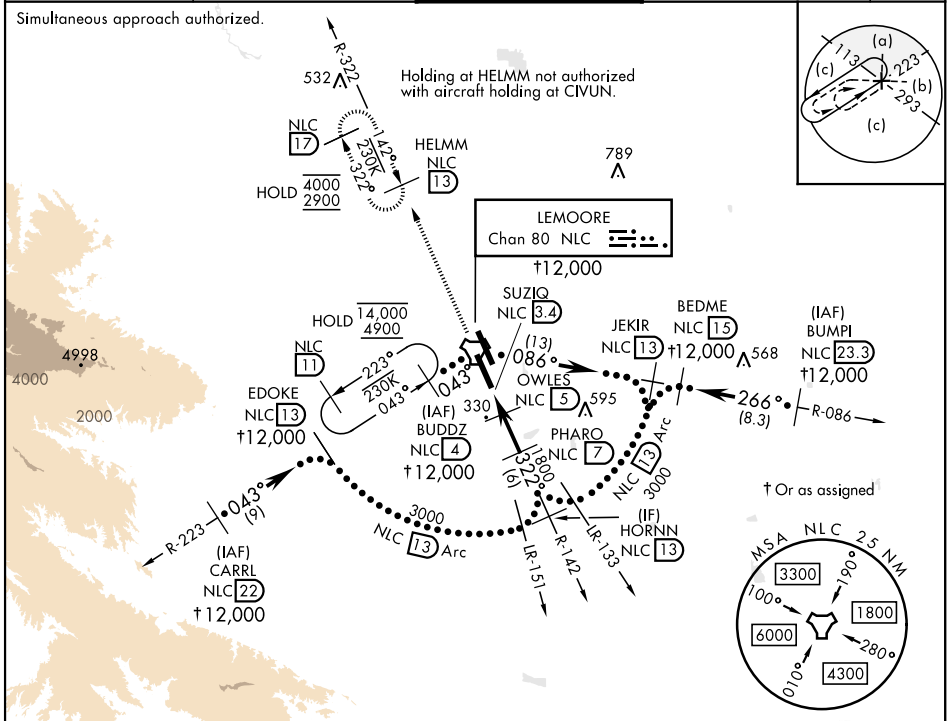
▲ \* When ALS inop, increase CAT CDE vis to 1 mile.



MISSED APPROACH: Climb to 2900 via NLC TACAN R-142 to NLC, then via NLC R-322 to HELMM and hold.

ATIS★ <b>121.575 327.15</b>	APP CON <b>124.1 269.025 (N)</b> <b>118.15 269.025 (S)</b>	TOWER★ <b>128.3 360.2</b>	GND CON <b>121.65 305.2</b>	ASR/ PAR
--------------------------------	--	------------------------------	--------------------------------	-------------

Simultaneous approach authorized.

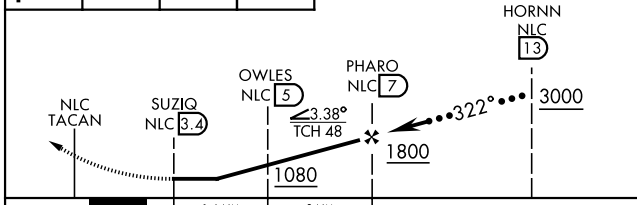


SW-2, 11 JUN 2026 to 09 JUL 2026

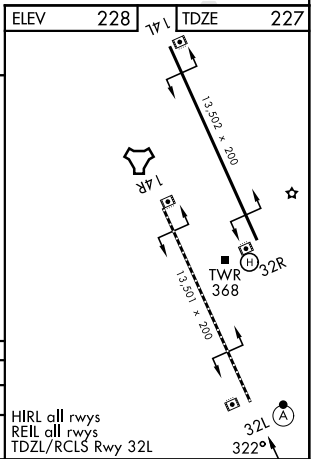
SW-2, 11 JUN 2026 to 09 JUL 2026

EMERG SAFE ALT 100 NM 16,700

2900 NLC R-142	NLC R-322	HELMM NLC 13
----------------------	--------------	--------------------



CATEGORY	C	D	E
S-32L *	580-5/8	353 (400-5/8)	
CIRCLING	680-1 1/2 452 (500-1 1/2)	780-2 552 (600-2)	800-2 572 (600-2)



# HI-TACAN X RWY 32L