

HI-TACAN Z RWY 14L

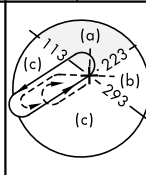
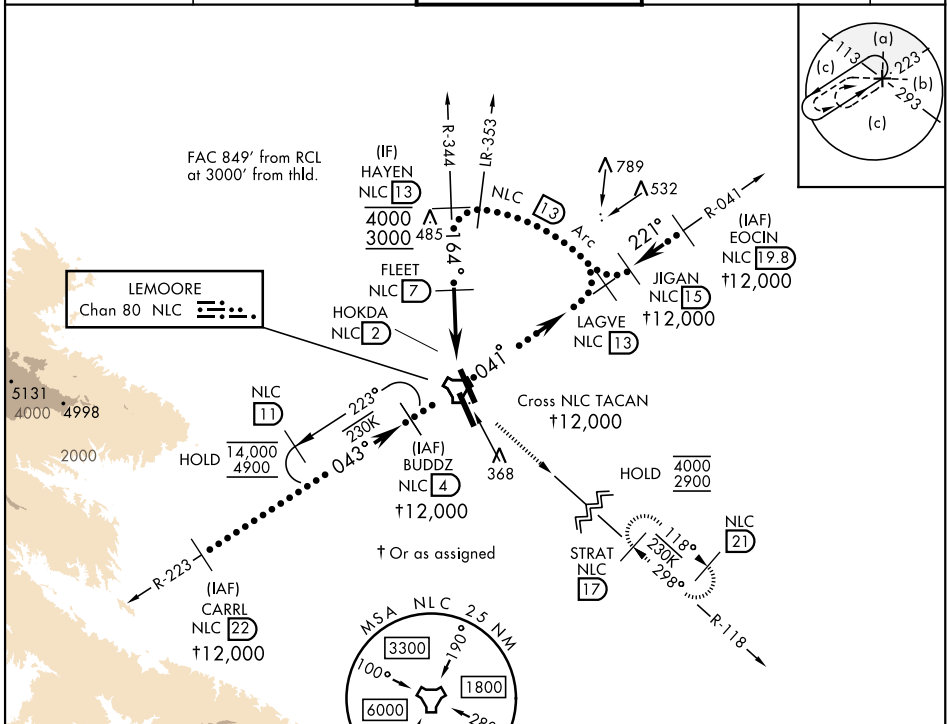
TACAN NLC Chan 80	APCH CRS 164°	Rwy Idg 13,502 TDZE 219 Arpt Elev 228
-----------------------------	-------------------------	--

[USN]

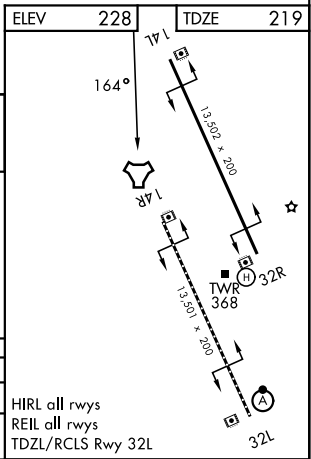
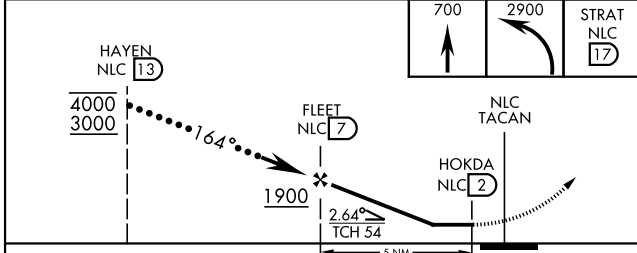
LEMOORE NAS (REEVES FIELD) (KNLC)

T MISSED APPROACH: Climb to 700 then climbing left turn to 2900 direct STRAT and hold.

ATIS★ 121.575 327.15	APP CON 124.1 269.025 (N) 118.15 269.025 (S)	TOWER★ 128.3 340.2	GND CON 121.65 305.2	ASR/ PAR
--------------------------------	--	------------------------------	--------------------------------	-------------



EMERG SAFE ALT 100 NM 16,700	ELEV 228	TDZE 219
------------------------------	----------	----------



CATEGORY	C	D	E
S-14L	660-1½	441	(500-1½)
CIRCLING	680-1½ 452 (500-1½)	780-2 552 (600-2)	800-2 572 (600-2)

HIRL all rwsys
REIL all rwsys
TDZL/RCLS Rwy 32L

HI-TACAN Z RWY 14L

SW-2, 11 JUN 2026 to 09 JUL 2026

SW-2, 11 JUN 2026 to 09 JUL 2026