

# RNAV (GPS) RWY 14L

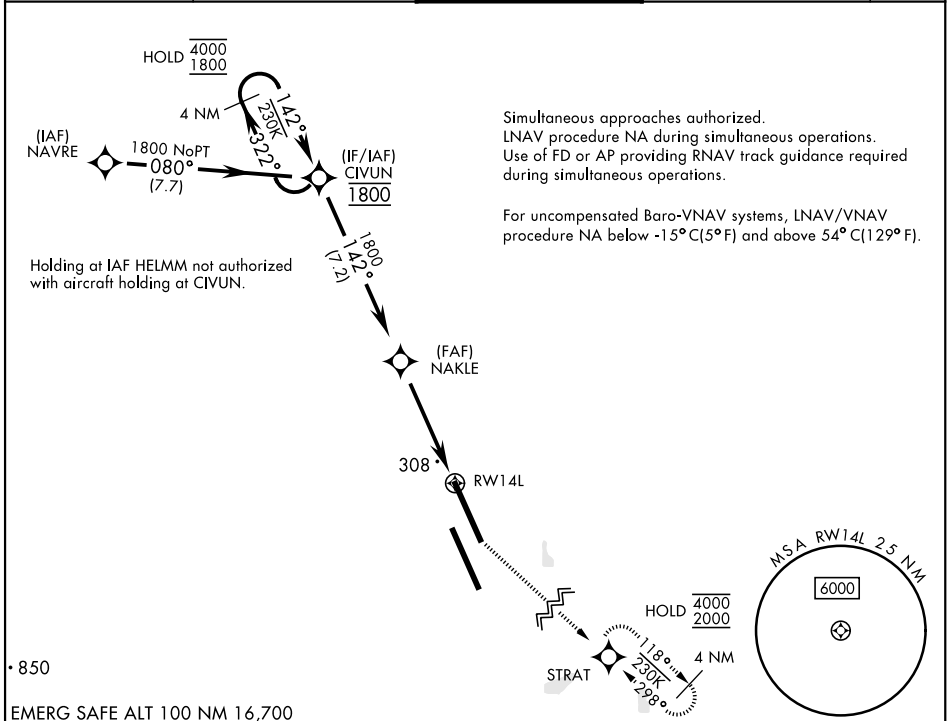
WAAS Chan <b>70209</b> <b>W14A</b>	APCH CRS <b>142°</b>	Rwy Idg <b>13,502</b> TDZE <b>219</b> Arprt Elev <b>228</b>
--	-------------------------	---

[USN]

LEMOORE NAS (REEVES FIELD) (KNLC)

RNP APCH - GPS	MISSED APPROACH: Climb to 1200, then climbing left turn to 2000 direct STRAT and hold.
----------------	--

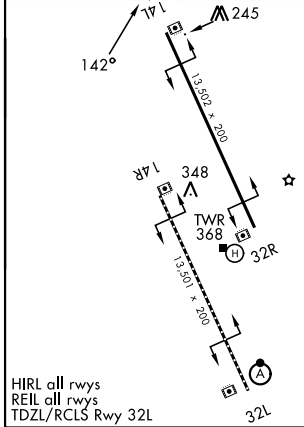
ATIS★ <b>121.575 327.15</b>	APP CON <b>124.1 269.025 (N)</b> <b>118.15 269.025 (S)</b>	TOWER★ <b>128.3 340.2</b>	GND CON <b>121.65 305.2</b>	ASR/ PAR
--------------------------------	--	------------------------------	--------------------------------	-------------



SW-2, 11 JUN 2026 to 09 JUL 2026

SW-2, 11 JUN 2026 to 09 JUL 2026

EMERG SAFE ALT 100 NM 16,700
ELEV 228   TDZE 219



4 NM Holding Pattern	CIVUN	NAKLE	STRAT	
4000/1800	142°	142°	1200, 2000	
GP 3.00° TCH 54	1800	1800	1.3 NM to RWY 14L	
			4.8 NM	
CATEGORY	A	B	C	D
LPV DA	419-3/4	200	(200-3/4)	
LNAV/VNAV DA	582-1	363	(400-1)	
LNAV MDA	680-1	461 (500-1)	680-1 3/8 461 (500-1 3/8)	780-2
CIRCLING	680-1	452 (500-1)	452 (500-1 1/2)	552 (600-2)

# RNAV (GPS) RWY 14L