

RNAV (GPS) RWY 32R

WAAS Chan 60335 W32B	APCH CRS 322°	Rwy Idg 13,502 TDZE 221 Arprt Elev 228
--	-------------------------	---

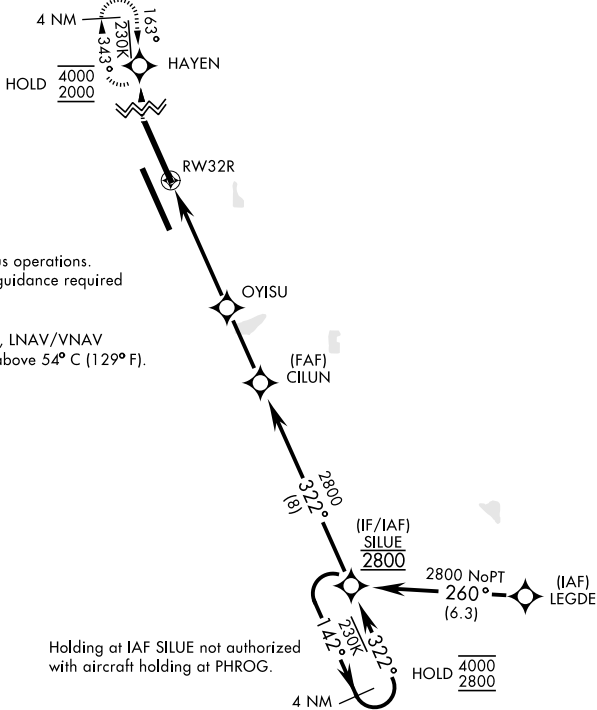
[USN]

LEMOORE NAS (REEVES FIELD) (KNLC)

RNP APCH - GPS

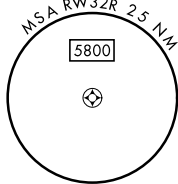
MISSED APPROACH: Climb to 1200, then climbing right turn to 2000 direct HAYEN and hold.

ATIS★ 121.575 327.15	APP CON 124.1 269.025 (N) 118.15 269.025 (S)	TOWER★ 128.3 360.2	GND CON 121.65 305.2	ASR/ PAR
--------------------------------	--	------------------------------	--------------------------------	-------------



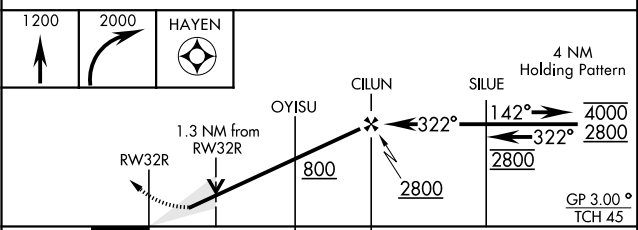
Simultaneous approaches authorized.
LNAV procedure NA during simultaneous operations.
Use of FD or AP providing RNAV track guidance required during simultaneous operations.

For uncompensated Baro-VNAV systems, LNAV/VNAV procedure NA below -15°C (5° F) and above 54° C (129° F).

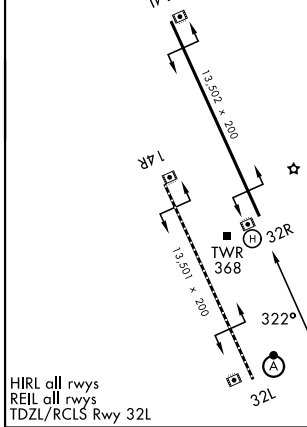


EMER SAFE ALT 100 NM 16,700

ELEV 228	TDZE 221
----------	----------



CATEGORY	A	B	C	D
LPV DA	421-3/4		200	(200-3/4)
LNAV/VNAV DA	587-1		366	(400-1)
LNAV MDA	680-1	459 (500-1)	680-13/8	459 (500-13/8)
CIRCLING	680-1	452 (500-1)	680-11/2	780-2 552 (600-2)



HIRL all rwy's
REIL all rwy's
TDZL/RCLS Rwy 32L

RNAV (GPS) RWY 32R

SW-2, 11 JUN 2026 to 09 JUL 2026

SW-2, 11 JUN 2026 to 09 JUL 2026