

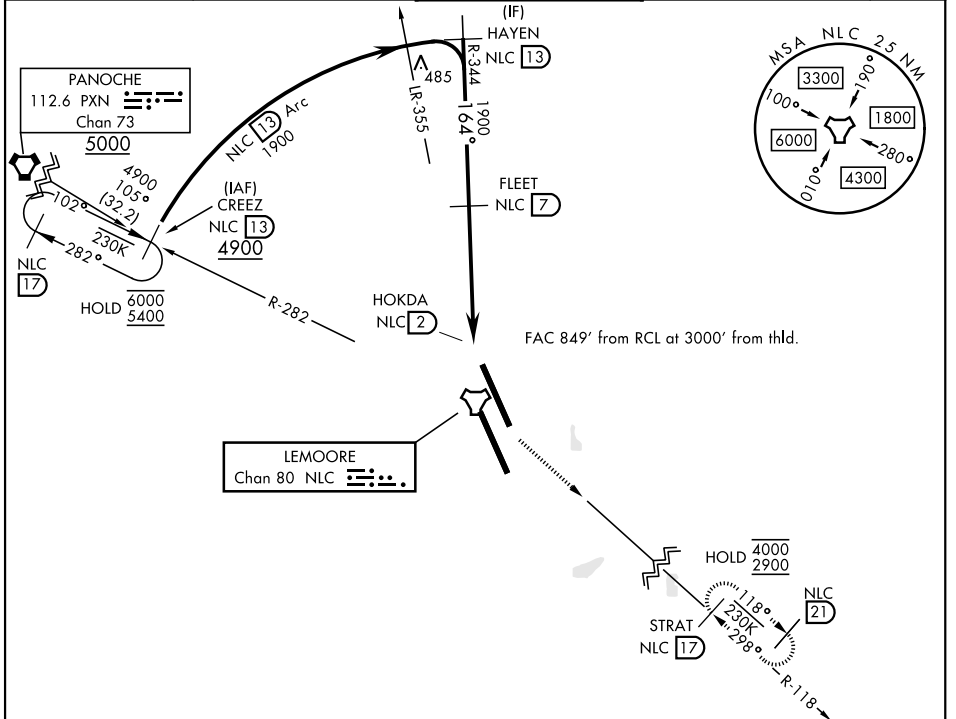
# TACAN Y RWY 14L

LEMOORE NAS (REEVES FIELD) (KNLC)

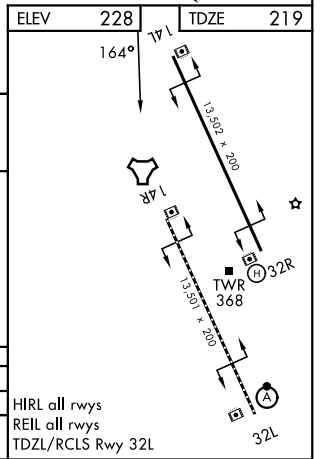
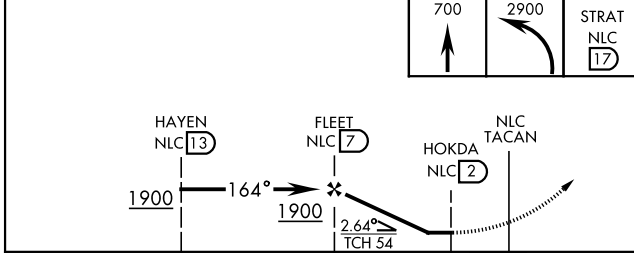
TACAN Chan <b>80</b>	NLC	APCH CRS <b>164°</b>	Rwy Idg <b>13,502</b> TDZE <b>219</b> Arprt Elev <b>228</b>
-------------------------	-----	-------------------------	---

[USN]

<p><b>MISSED APPROACH:</b> Climb to 700 then climbing left turn to 2900 direct STRAT and hold.</p>				
<p>ATIS★ <b>121.575 327.15</b></p>	<p>APP CON <b>124.1 269.025 (N)</b> <b>118.15 269.025 (S)</b></p>	<p>TOWER★ <b>128.3 340.2</b></p>	<p>GND CON <b>121.65 305.2</b></p>	<p>ASR/ PAR</p>



EMERG SAFE ALT 100 NM 16,700



CATEGORY	A	B	C	D
S-14L	660-1 441 (500-1)		660-1 3/8 441 (500-1 3/8)	
CIRCLING	680-1 452 (500-1)		680-1 1/2 452 (500-1 1/2)	780-2 552 (600-2)

HIRL all rws  
REIL all rws  
TDZL/RCLS Rwy 32L

# TACAN Y RWY 14L

SW-2, 11 JUN 2026 to 09 JUL 2026

SW-2, 11 JUN 2026 to 09 JUL 2026