

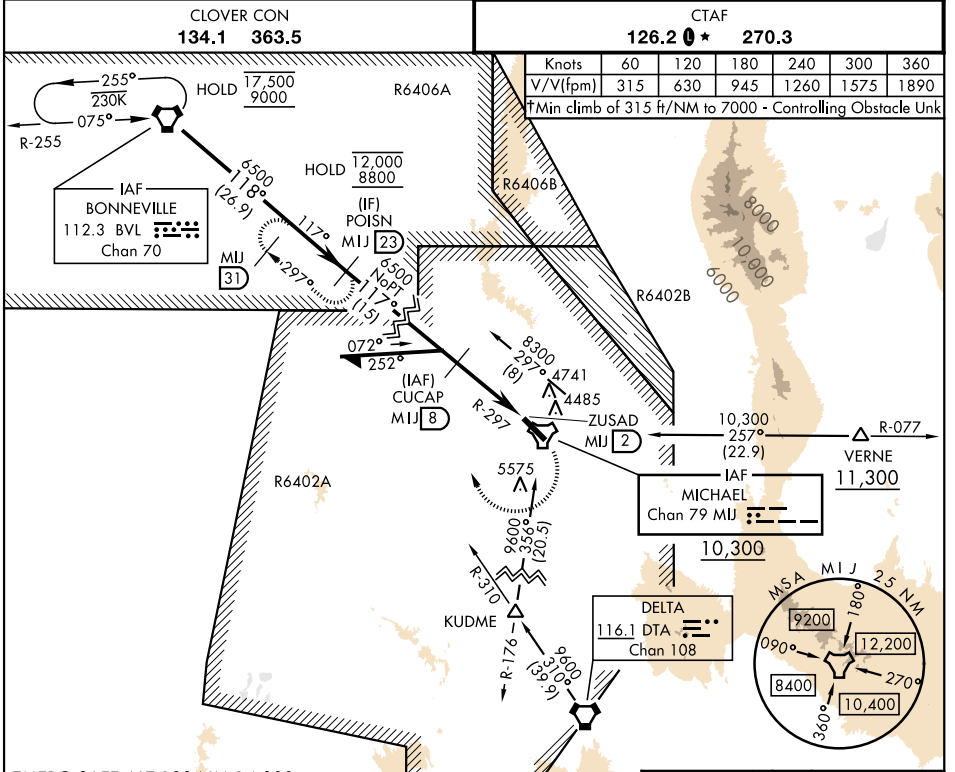
TACAN RWY 12

TACAN MJJ Chan 79	APCH CRS 117°	Rwy Idg 10,000 TDZE 4344 Arprt Elev 4351
-------------------	---------------	--

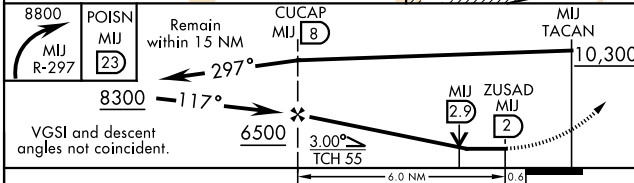
[USA] MICHAEL AAF (DUGWAY PROVING GROUND) (KDPG)

Procedure NA for arrival on BVL VORTAC via V200 southwest bound without holding at Bonneville. ATC clearance required. Procedure lies within R6402A, PPR. Use KENV-ENV (Wendover) altimeter when local altimeter not available. VDP not authorized with KENV-ENV (Wendover) altimeter setting.

MISSED APPROACH: Climbing right turn to 8800 via MJJ TACAN R-297 to POISN/MJJ 23 DME and hold.

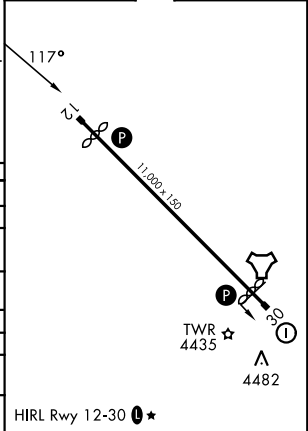


EMERG SAFE ALT 100 NM 14,000



ELEV	4351	TDZE	4344
------	------	------	------

CATEGORY	A	B	C	D	E
S-12†	4860-1	516 (600-1)	4860-1 $\frac{3}{8}$	516 (600-1 $\frac{3}{8}$)	
S-12	5180-1 836 (900-1)	5180-1 $\frac{1}{4}$ 836 (900-1 $\frac{1}{4}$)	5180-2 $\frac{1}{2}$	836 (900-2 $\frac{1}{2}$)	
CIRCLING	5180-1 $\frac{1}{4}$	830 (900-1 $\frac{1}{4}$)	5180-2 $\frac{1}{2}$ 830 (900-2 $\frac{1}{2}$)	5880-3 1530 (1600-3)	6300-3 1950 (2000-3)
KENV - ENV (WENDOVER) ALTIMETER SETTING MINIMUMS					
S-12†	5020-1	676 (700-1)	5020-1 $\frac{7}{8}$	676 (700-1 $\frac{7}{8}$)	
S-12	5340-1 $\frac{1}{4}$ 996(1000-1 $\frac{1}{4}$)	5340-1 $\frac{1}{2}$ 996(1000-1 $\frac{1}{2}$)	5340-3	996 (1000-3)	
CIRCLING	5340-1 $\frac{1}{4}$ 990(1000-1 $\frac{1}{4}$)	5340-1 $\frac{1}{2}$ 990(1000-1 $\frac{1}{2}$)	5340-3 990 (1000-3)	6040-3 1690(1700-3)	6460-3 2110 (2200-3)



DUGWAY PROVING GROUND, UTAH 40°12'N-112°56'W MICHAEL AAF (DUGWAY PROVING GROUND) (KDPG)

Amdt 4 19MAR26

TACAN RWY 12

SW-4, 11 JUN 2026 to 09 JUL 2026

SW-4, 11 JUN 2026 to 09 JUL 2026