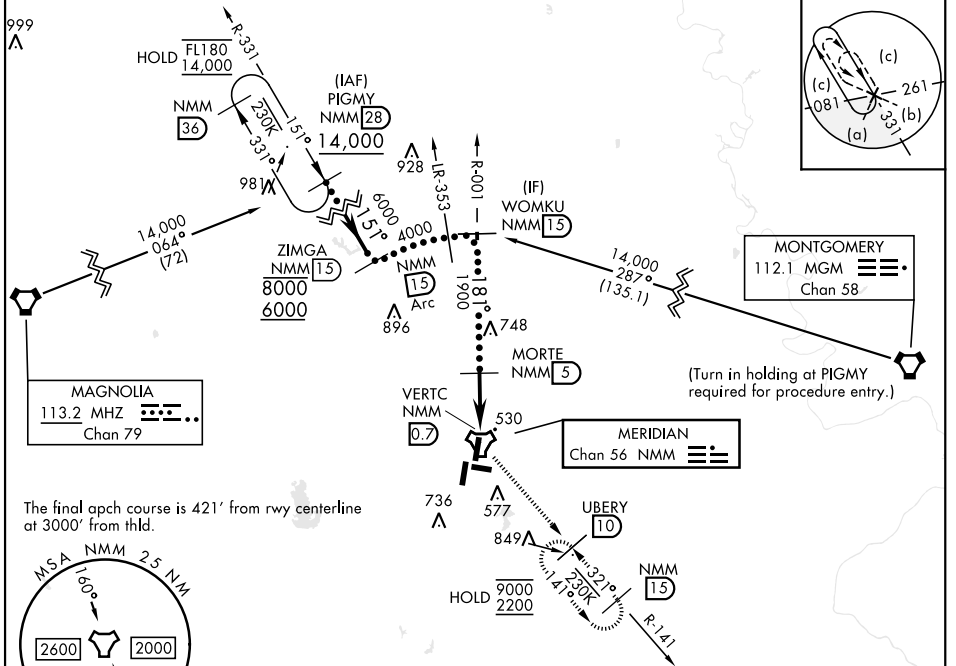


HI-TACAN Z RWY 19L

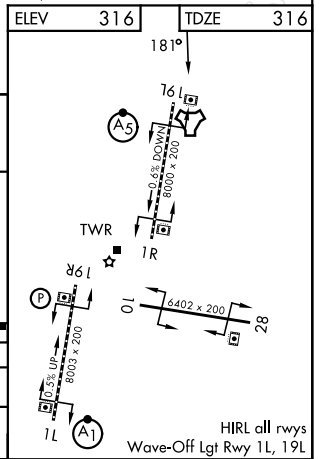
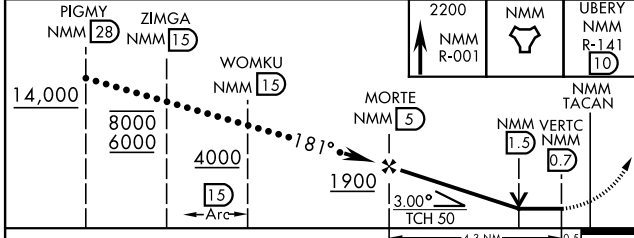
TACAN NMM Chan 56	APCH CRS 181°	Rwy ldg TDZE Arprt Elev 8000 316 316	[USN]	MERIDIAN NAS (MC CAIN FIELD) (KNMM)
-----------------------------	-------------------------	--	-------	-------------------------------------

▼ * When ALS inop, increase vis to 1 3/8 miles.
 ** Circling CAT C remain within 1.7 NM, CAT D within 2.3 NM, CAT E within 4.5 NM.

APP CON ATIS ★ 290.525	(S) 120.5 269.325 (N) 379.275 (W) 120.95 276.4 (E) 121.275 348.7	MC CAIN TOWER ★ 126.2 340.2 Rwy 01L, 19L, and 28 126.2 360.2 Rwy 01R, 19R, and 10	MC CAIN GND CON 336.4	ASR/PAR
-------------------------------------	---	---	---------------------------------	---------



ELEV	316	TDZE	316
------	-----	------	-----



CATEGORY	C	D	E
S-19L *	800-1	484	(500-1)
CIRCLING **	840-1 1/2 524 (600-1 1/2)	880-2 564 (600-2)	1080-2 3/4 764 (800-2 3/4)

HI-TACAN Z RWY 19L

SC-4, 11 JUN 2026 to 09 JUL 2026

SC-4, 11 JUN 2026 to 09 JUL 2026

HIRL all rwy's
 Wave-Off Lgt Rwy 1L, 19L