

MERIDIAN, MISSISSIPPI

ILS W or LOC/DME W RWY 19L

LOC/DME I-NMM 109.7 Chan 34	APCH CRS 191°	Rwy Ldg TDZE Arprt Elev 8000 316 316
---	-------------------------	--

[USN]

MERIDIAN NAS (MC CAIN FIELD) (KNMM)

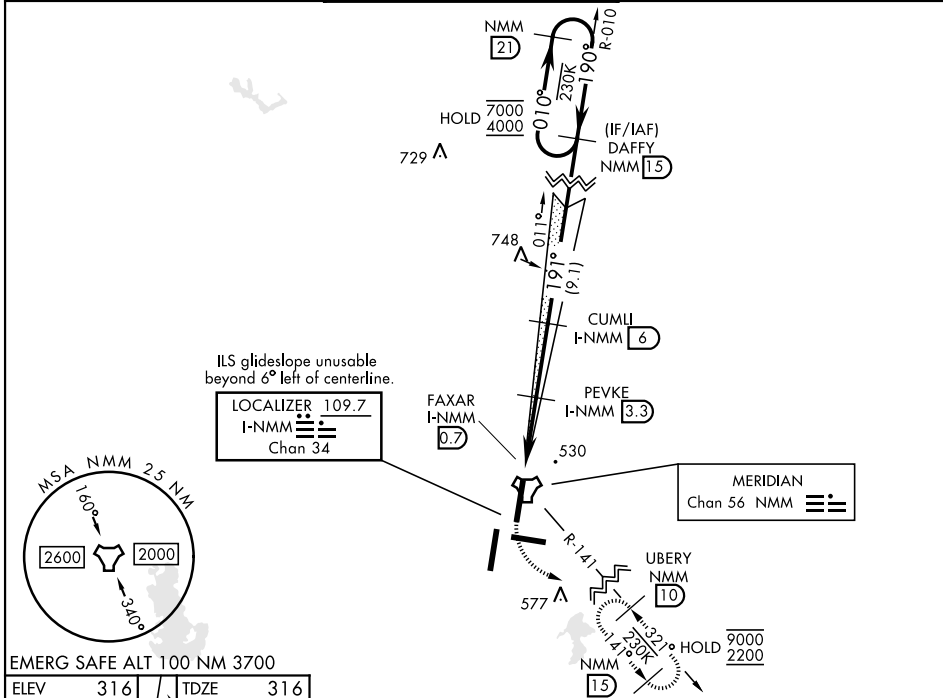
TACAN and RADAR required.

▲ When ALS inop, increase vis to $\frac{3}{4}$ mile.
****** When ALS inop, increase CAT AB vis to 1 mile, CAT CDE vis to $\frac{1}{4}$ miles.
******* Circling CAT B remain within 1.5 NM, CAT C within 1.7 NM, CAT D within 2.3 NM, CAT E within 4.5 NM.



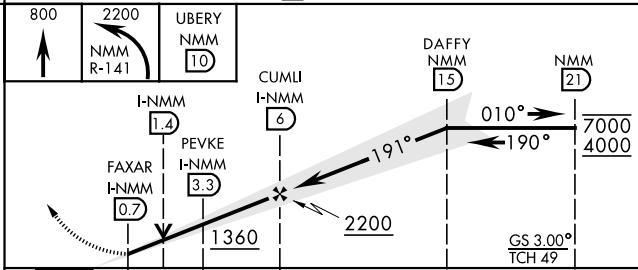
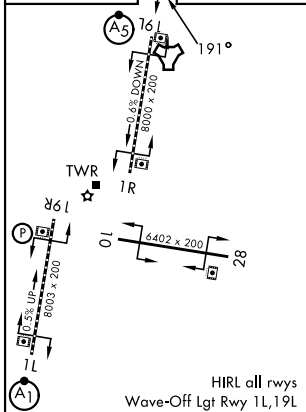
MISSED APPROACH: Climb to 800, then climbing left turn to 2200 to intercept NMM TACAN R-141 to UBERY and hold.

APP CON	MC CAIN TOWER ★	MC CAIN GND CON	ASR/PAR
ATIS ★ 290.525	120.5 269.325 (S) 379.275 (N) 120.95 276.4 (W) 121.275 348.7 (E)	126.2 340.2 (01L, 19L, 28) 126.2 360.2 (01R, 19R, 10)	336.4



EMERG SAFE ALT 100 NM 3700

ELEV	316	TDZE	316
------	-----	------	-----



CATEGORY	A	B	C	D	E
S-ILS 19L*	516- $\frac{1}{2}$		200	(200- $\frac{1}{2}$)	
S-LOC 19L**	740- $\frac{1}{2}$	424 (500- $\frac{1}{2}$)	740- $\frac{3}{4}$	424	(500- $\frac{3}{4}$)
CIRCLING***	820-1	840-1	840-1 $\frac{1}{2}$	880-2	1080-2 $\frac{3}{4}$
	504 (600-1)	524 (600-1)	524 (600-1 $\frac{1}{2}$)	564 (600-2)	764 (800-2 $\frac{3}{4}$)

MERIDIAN, MISSISSIPPI

32°33'N-88°33'W

MERIDIAN NAS (MC CAIN FIELD) (KNMM)

Amdt 1 22JAN26

ILS W or LOC/DME W RWY 19L

SC-4, 11 JUN 2026 to 09 JUL 2026

SC-4, 11 JUN 2026 to 09 JUL 2026